



Collaborating during the unprecedented

Listening to each other **Helping**

from a distance **Working Through**

extraordinary challenges **Learning**

new skills **Developing** innovative ways

Creating a plan **Adapting** to life

Recovering some normalcy

Glimpsing a light at

the end of the tunnel

Remaining faithful

Regaining hope

Seeing a promising

future **Forging**

**ONWARD
STRONG**



FULCRUM

Community Report 2021

Table of Contents

3	A Letter From Our Leadership	18	<i>Uplift</i> : Closing in on the Finish Line
4	From Archbishop Etienne		
5	Catholic Schools in the Archdiocese of Seattle	20	Fulcrum 2020/21 Year in Review
6	Fulcrum Mission & Programs	22	Financials
7	Program Highlights	25	Cumulative Giving
8	Fulcrum Programs Enrich the Entire Catholic School Community	27	Annual Contributors
12	COVID-19 Emergency Relief Fund	34	Gifts in Tribute
14	New Leadership in Early Childhood Education	35	Fulcrum Central Endowments
15	Becraft Scholars Program Takes Off!	36	What Will Your Legacy Be?
16	Celebration of Light 2021 Rocks the (Virtual) House!	37	Fulcrum Legacy Society
		38	Trustees

Our Team

Vivian Shannon
Executive Director

Julie Coleman
*Managing Director,
Uplift Campaign*

Conne McGlynn Bruce
Advancement Director

Susan Ocoma
Programs Director

Loren Skaggs
Marketing Director

Alana Bell
*Becraft Scholars
Program Director*

Whittney Dideon
HR Manager

Julie Francavilla
Development Manager

Nicole Gummow
Events Manager

Savannah Hawk
*Business Manager &
Executive Assistant*

Connor Kelly
Database Administrator

Christina Payne
*Communications
Manager*

Stephanie Singler
Engagement Manager

Cathy Wise
Graphic Design Manager

LOANED EXECUTIVES
*to the Office for
Catholic Schools*

David Mayer
*Early Childhood Education
(ECE) Director*

Kristin Moore
*Marketing & Enrollment
Director*

John Sullivan
*Assistant Superintendent
for Financial Services*

Kelly Surapaneni
*Coordinator of Leadership
Development*

A Letter From Our Leadership

Dear Friends of Fulcrum,

This past year, we proved that we are stronger together. The COVID-19 pandemic tested the world in ways we never imagined. It would have been easy to remain isolated, cutting ourselves off from one another.

Instead, the Fulcrum family pulled together in support of Catholic education, archdiocesan schools, and one another. You proved time and again the beautiful strength and resilience of our Catholic community. Through your unwavering support of Fulcrum programs, you truly lived your faith, becoming shining lights of hope in these dark times.

Instead of closing your doors to the outside world, you opened your hearts and provided critical relief to the 72 schools and nearly 20,000 students through the COVID-19 Emergency Relief Fund. Instead of checking out of a mentally draining year, you logged in to the first ever virtual Celebration of Light gala, embracing the changes and helping Fulcrum raise over \$2 million in support of Catholic education.

Instead of saying no, you said yes again and again to putting Catholic schools, students, and educators first. Thanks in large part to your generosity, schools in the Archdiocese of Seattle didn't miss a single day of instruction throughout the pandemic and were poised to make the transition from remote learning back to in-person classes.

Thank you does not begin to cover the amount of gratitude in our hearts for what you have done this past year. You have changed so many lives and set us on a course for a bright future. Let us keep striving toward that future, moving together into this new year with hope and love.

Onward Strong!



Tony Audino
Tony Audino
Chair of the Board



Vivian K. Shannon
Vivian K. Shannon
Executive Director

From Archbishop Etienne

Sole Member, Fulcrum Foundation



This past year presented many challenges but also moments of compassion and faith. Our Catholic community came together, supporting one another and living Christ's teachings each and every day.

Not long ago, I announced the Archdiocese of Seattle's new Pastoral Plan. At the heart of this mission is our relationship with Jesus Christ. We have selected four core values—faith in action, hope in resurrection, truth in love, and unity in diversity—to help Catholics re-examine and renew their relationship with Jesus.

The Fulcrum Foundation exemplifies these values in its work throughout the Archdiocese of Seattle. Strengthening and supporting Catholic education is vital to the life of the Church. Our Catholic schools provide Christ-centered education to all, and the Fulcrum Foundation helps make this vital ministry a reality.

To Fulcrum's donors and supporters, thank you for giving your time, talent, and gifts in support of Catholic education. Thank you for keeping our Catholic faith alive in your lives and in our community. I pray we all continue to share the joy of Jesus with each other. As always, I remain,

In The Heart of Christ,

*Most Rev. Paul D. Etienne, DD, STL
Archbishop of Seattle*



Catholic Schools in the Archdiocese of Seattle 2020/21

72

CATHOLIC SCHOOLS IN THE ARCHDIOCESE OF SEATTLE; 61 ELEMENTARY SCHOOLS AND 11 HIGH SCHOOLS

ELEMENTARY AND MIDDLE SCHOOLS

All Saints Catholic School, Puyallup
Assumption-St. Bridget School, Seattle
Assumption Catholic School, Bellingham
Christ the King Catholic School, Seattle
Eastside Catholic School, Sammamish
Forest Ridge School of the Sacred Heart, Bellevue
Holy Family Bilingual Catholic School, Seattle
Holy Family Parish School, Kirkland
Holy Family School, Auburn
Holy Family School, Lacey
Holy Rosary Bilingual Academy, Fife
Holy Rosary School, Edmonds
Holy Rosary School, Seattle
Immaculate Conception & Our Lady of Perpetual Help School, Everett
Immaculate Conception Regional School, Mount Vernon
Our Lady of Fatima Parish School, Seattle
Our Lady of Guadalupe School, Seattle
Our Lady of Lourdes Catholic School, Vancouver
Our Lady of the Lake Parish School, Seattle
Our Lady Star of the Sea Catholic School, Bremerton
Queen of Angels Catholic School, Port Angeles
Sacred Heart School, Bellevue
Seattle Nativity School, Seattle
St. Alphonsus Parish School, Seattle
St. Anne School, Seattle
St. Anthony School, Renton
St. Benedict Catholic School, Seattle
St. Bernadette Parish School, Seattle
St. Brendan School, Bothell
St. Catherine of Siena School, Seattle

2,000

TEACHERS, ADMINISTRATORS, AND STAFF ACROSS ALL SCHOOLS

St. Cecilia Catholic School, Bainbridge Island
St. Charles Borromeo Catholic School, Tacoma
St. Frances Cabrini School, Lakewood
St. Francis of Assisi School, Seahurst
St. George Parish School, Seattle
St. John Catholic School, Seattle
St. Joseph Catholic School, Vancouver
St. Joseph School, Chehalis
St. Joseph Parish School, Issaquah and Snoqualmie
St. Joseph School, Seattle
St. Louise Parish School, Bellevue
St. Luke School, Shoreline
St. Madeleine Sophie Catholic School, Bellevue
St. Mark Parish School, Shoreline
St. Mary Magdalen Catholic School, Everett
St. Mary School, Aberdeen
St. Matthew School, Seattle
St. Michael Catholic School, Snohomish
St. Michael Parish School, Olympia
St. Monica Catholic School, Mercer Island
St. Nicholas Catholic School, Gig Harbor
St. Patrick Catholic School, Tacoma
St. Paul School, Seattle
St. Philomena Catholic School, Des Moines
St. Pius X Catholic School, Mountlake Terrace
St. Rose School, Longview
St. Therese Catholic Academy, Seattle
St. Thomas More Parish School, Lynnwood
St. Vincent de Paul School, Federal Way
Villa Academy, Seattle
Visitation Catholic STEM Academy, Tacoma

19,846

STUDENTS IN GRADES PRE-K THROUGH 12 INCLUDING 1,209 IN PRE-K PROGRAMS



HIGH SCHOOLS

Archbishop Thomas J. Murphy High School, Everett
Bellarmine Preparatory School, Tacoma
Bishop Blanchet High School, Seattle
Eastside Catholic School, Sammamish
Forest Ridge School of the Sacred Heart, Bellevue
Holy Names Academy, Seattle
Kennedy Catholic High School, Burien
O'Dea High School, Seattle
Pope John Paul II High School, Lacey
Seattle Preparatory School, Seattle
Seton Catholic College Preparatory High School, Vancouver





FULCRUM MISSION

Founded in 2002, the Fulcrum Foundation leverages financial assistance to support and strengthen Catholic schools in the Archdiocese of Seattle primarily through tuition assistance grants, school partnership grants, and grants for transformational leaders.

Fulcrum Foundation Programs

Fulcrum's mission to support schools touches all aspects of daily school life.

Supporting Students

Increasing access to Catholic schools in Western Washington by providing tuition assistance grants.

Students are the core of Catholic school life. Fulcrum supports students by making Catholic education more accessible through tuition assistance and equity initiatives such as the Becraft Scholars Program.

Supporting Schools

Providing comprehensive support for our Catholic schools.

Fulcrum's programs help Catholic schools continue their mission of providing faith-filled, academically excellent education through programs such as the School Partnership Grant Program and the Building Diversity and Inclusion Grant Program.

Supporting Educators

Creating new pathways to leadership for teachers and principals.

Strong leadership is crucial for Catholic school communities. Fulcrum supports leadership development through leadership grants, helping current and future school leaders undergo training and pursue additional education.



Program Highlights of the 2020/21 Academic Year

SUPPORTING STUDENTS

\$3,019,000

awarded in tuition assistance

Funding included grants from the Tuition Assistance Grant Program (TAP) and other non-application based tuition assistance programs and endowments.

\$40,000

was the median income of a family receiving a TAP grant

75%

of TAP recipients were students of color

1,905

grants provided across all tuition assistance programs

SUPPORTING SCHOOLS

\$7,124,000

awarded in school aid

Funding included grants from the School Partnership Grant Program, Building Diversity and Inclusion Program, Early Childhood Education Fund, Rainbow Program, and Seton Endowment for Pierce County Schools.

\$1,564,344

in School Partnership Grant Program funding was requested

43%

of funding requests were unmet

34

schools funded through the School Partnership Grant Program

17

schools funded through the Building Diversity and Inclusion Grant Program

SUPPORTING EDUCATORS

\$91,000

awarded in leadership support

Funding included Educational Leadership grants, Teacher Excellence grants, Pierce County Teacher grants, and funding for the Office for Catholic Schools' Building Leadership Capacity initiatives.

8

Educational Leadership scholarships awarded

165

GRACE teacher-leaders

40

Leadership Academy participants

Fulcrum Programs Enrich the Entire Catholic School Community

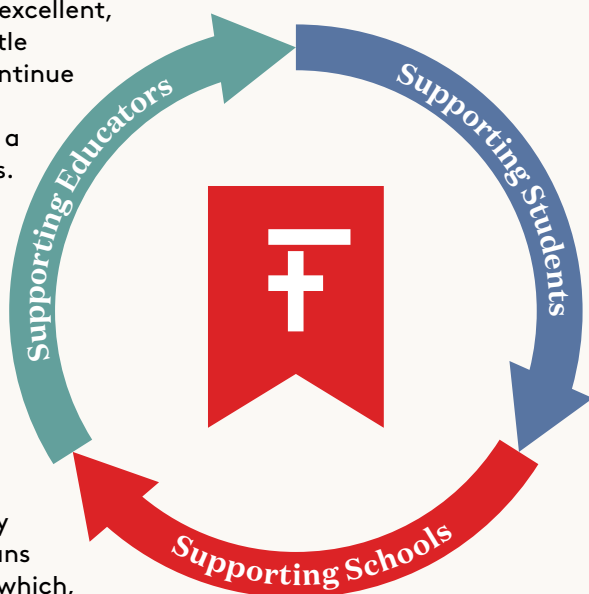


The Programs Work Together

Fulcrum was established to ensure that the excellent, 150-year-old Catholic school system in Seattle receives the financial support it needs to continue its legacy of a Christ-centered education, providing students with academic rigor and a strong moral compass throughout their lives.

By funding students, schools, and educators, Fulcrum begins a cycle of support that builds up every piece of a school community. Supporting students helps families afford Catholic education, bringing more diverse voices into each school community. Supporting schools allows each community to improve curriculum and complete capital projects, giving students and educators the tools they need to succeed. Supporting educators means providing teachers with leadership training which, in turn, supports the students and staff at each school.

This cycle of success creates a promising future for Catholic education, all thanks to our incredible school communities and the support of Fulcrum donors!



Collaborating during the unprecedented. In the following pages, we will show you how Fulcrum programs build vibrant communities of students, families, and educators. The impact of Fulcrum donors is evident across the breadth of archdiocesan schools—from rural communities to urban, from large to small. St. Rose School in Longview and St. Philomena Catholic School in Des Moines are home to two different school communities, but both exemplify the power of Fulcrum partnership with archdiocesan schools.

Principals Kristin Silva from St. Rose and Steve Morissette from St. Philomena tell us in their own words exactly how the different Fulcrum programs have strengthened each of their particular communities.



Kristin Silva

Kristin Silva began teaching at St. Rose School in Longview in 2007. She remained at St. Rose throughout the next 13 years and began her tenure as principal in 2020, taking over leadership of the school community in the midst of a global pandemic.

KS: “Without the aid of the Fulcrum Foundation, many students would not have the opportunity to remain at St. Rose. Our goal is to continue to provide access to a quality Catholic education in Cowlitz County and we could not accomplish this without the support and generosity of the Fulcrum Foundation.”



Steve Morissette

Dr. Steve Morissette joined the St. Philomena Catholic School community in Des Moines in 2010. He has taught at several schools in the Archdiocese of Seattle, including St. Vincent de Paul School in Federal Way, Holy Family Bilingual Catholic School in Seattle, and All Saints School in Puyallup and Fife.

SM: “Fulcrum is the best gift we as Catholic schools have in this archdiocese. They provide support in so many ways, but most importantly, they help families who truly want their children to have a Catholic education. They help all children who attend our schools, no matter their ethnic background and their religious background. They have been a beacon of equity and accessibility for years. Fulcrum has developed into a full-fledged, multi-faceted support system for Catholic schools, not one that just provides tuition assistance grants. They truly are the foundation for all Catholic schools.”



Supporting Educators

Leadership Grants

KS: "Last year, I accepted the position of principal knowing that I would have to go back to school to receive both my Master's in Educational Leadership and my principal certification. Over the past year,

the Fulcrum Leadership Grant has funded and supported me along this journey. Completing my principal certification in May from Saint Martin's University, I am grateful for this leadership grant and the help it provided to offset the cost of returning to school. I am currently two classes away from completing my Master's in Educational Leadership and I am grateful that Fulcrum once again renewed their commitment to support this part of my educational journey."

has been 95% or above. We are using our ECE grant to purchase an interactive whiteboard for our pre-k program. This will allow the pre-k teacher a multitude of opportunities to further strengthen the pre-k program. It will also give additional learning opportunities for the students."

KS: "Our early childhood program is imperative to our school since it feeds into our K-8 program. Having a solid foundation of faith and academics starting in preschool helps us build relationships with parents and families that we hope will last for years to come. With the help of the ECE grant, we were able to purchase a light and water

table for several pre-k classrooms. This will aid in providing additional centers and enrichment activities for the students, as well as make early literacy fun and engaging for all students."



families due to their inability to pay tuition. The sanitizing supplies cost thousands of dollars that Fulcrum graciously covered for us."

sanitizing stations throughout the school, face shields and masks, and disinfecting wipes for all classrooms. We also used some of our grant to pay for extra deep cleanings from an outside company. Without this fund, we would have lost many

School Partnership Grants

KS: "This year, we used our School Partnership Grant to rekey our entire school building. We have made a concerted effort in the past few years to work on our all-school safety plan, but our keys have not been changed for 15 years. Rekeying the school allowed us to control who was in the building and when they come and go. With our school being used by outside groups and the greater community, this was a necessity for the safety of our school."

Building Diversity and Inclusion Grants

KS: "Living in a rural community, our students are not exposed to much diversity, be it skin color, language, etc. St. Rose chose to use these funds to build a diverse library that all students would be represented in. As a staff, we will be

doing a book study on *The Blind Spot* and the implicit biases we inherently have. In addition, we will be using the funds to bring in culturally diverse programs at assemblies next year for our students. This is important enrichment for our students as we prepare them to be world leaders, we need to expose them to the world and all it has to offer."



Supporting Students

Tuition Assistance Grants

KS: "Receiving tuition assistance at St. Rose helped the community to thrive. Receiving tuition from outside sources plays a major role in how we continue to be able to keep our doors open. Our donations from the auction, our Annual Appeal, and generous benefactors only go so far and outside supporters like Fulcrum help us fill those gaps and allow us to continue to grow our school community."

SM: "We had more families apply for tuition assistance than I have ever seen at St. Philomena School. We typically help around 80 families with some form of tuition assistance, last year we helped 98 families! The

Fulcrum grants were a lifesaver because they allowed us to use our other financial resources to help our families that requested financial aid. Families need additional help to send their children to Catholic schools. Most Catholic schools have in-house tuition assistance opportunities for them, but it is not always enough. We rely on Fulcrum to help cover the gap; we would be truly lost without them."



Supporting Schools

Early Childhood Education Grant Program

SM: "Early childhood programs offer students the opportunity to get acclimated into the school at an early age. They learn the traditions of both the school and the Church. They provide the students with a solid academic and religious foundation. The early childhood program provides the building blocks for a Catholic school. Students feel welcomed, confident, and ready to go into

kindergarten. We have found students who come from a strong early childhood program do much better in kindergarten and are stronger students. Our retention rate for our pre-k to kindergarten program over the last seven years

COVID-19 Emergency Relief Fund

SM: "St. Philomena School used our first COVID grant to help with operating costs and tuition expenses. Due to the pandemic and our remote learning model, our pastor and school commission decided that we should offer a 25% discount in tuition for our families. They felt it was morally the right thing to do to help out our families. We had 60 families accept the tuition discount. This helped out our families, but also was a factor in our overall budget. The second COVID grant was used to purchase Chromebooks and helped us reach our goal of 1:1 technology for all of our students. The COVID grant was a godsend."

KS: "St. Rose used our COVID-19 relief grants for a variety of things. We used it to purchase Swivl cameras for hybrid learning. In addition, we used the grant to support families who needed extra assistance to stay in our community. We also used it to purchase cleaning and sanitizing supplies like new



COVID-19 Emergency Relief Fund 2020/21

As a global pandemic shuttered school buildings and sent students home, Catholic schools asked for help.

Fulcrum donors answered.

Helping from a distance.

In April 2020, the Fulcrum Foundation Board of Trustees approved the COVID-19 Emergency Relief Fund, seeding the new fund with \$1 million for schools in need. Fulcrum supporters immediately lent their support to the program, raising over \$3.5 million—including \$2 million from the Norcliffe Foundation—in just four months.

By July 2020, archdiocesan schools were applying for COVID-19 grants to prepare for the 2020/21 school year. From August 2020–April 2021, Fulcrum disbursed \$4,638,000 to 63 schools, allowing them to purchase new technology for remote and hybrid learning, salaries for additional teachers and staff to maintain social distancing requirements, cleaning supplies and PPE for health and safety, and increase tuition assistance support for families in need.

The additional tuition assistance allowed many students to remain in their Catholic schools throughout the school year, giving them access to in-person, online, and hybrid

learning opportunities. Archdiocesan schools remained open throughout the pandemic—never missing a day of instruction—and lived their calling to provide an excellent, faith-filled education.

In fact, many Fulcrum-supported schools have experienced a spike in enrollment interest for the 2021/22 school year, thanks to the tireless efforts of administrators, educators, and staff.

“Where would we be without Fulcrum? Fewer students and fewer families would have access to a faith-filled Catholic education—especially during the pandemic,” said Kristin Dixon, the superintendent for Catholic schools. “The Fulcrum Foundation provided much-needed support to help us weather this storm! I believe the Holy Spirit ‘stirred the pot’ during the pandemic to inspire all our leaders to think and act more creatively and in solidarity with one another. With a can-do attitude, Fulcrum’s relief aid allowed us to navigate the regulations that required creativity to face questions never before asked, and work in solidarity with one another for answers.”

Thank you, Fulcrum donors, for making an impossible school year possible!



New Leadership in Early Childhood Education

This year, Fulcrum marked several big milestones in early childhood education (ECE)! Dave Mayer joined the Office for Catholic Schools (OCS) as the new director of early childhood education. This Fulcrum-funded position helps develop and grow early childhood programs across Western Washington.



Creating a plan.

"ECE provides outstanding kindergarten readiness in important areas such as language, math, and social skills, and puts students on a path for a successful school experience in a faith-filled environment," said Dave.

With Dave's leadership and Fulcrum's newly streamlined application process for Early Childhood Education Grants, 35 archdiocesan schools received funding to enhance both their indoor and outdoor programming, while giving staff the opportunity for professional development.

Dave also oversaw the first virtual Early Learning Professional Development Day, which consisted of five different sessions directly related to growing early learning programs, and started Early Learning Roundtables for ECE leaders to share resources with one another.

"We will continue to build our current programs and look for growth opportunities to expand programming and professional development across the archdiocese," Dave said, looking forward to the future of ECE. "More families should have the opportunity to experience early learning in a Christ-centered environment."



Becraft Scholars Program Takes Off!

The Becraft Scholars Program started strong in February 2021! Created in partnership with the Ferry Family Foundation, Becraft Scholars is an equity-based scholarship program primarily for Black and African American students.

Developing innovative ways.

The program has already accepted its first two cohorts with 24 students in total. Becraft Scholars partnered with five schools—Holy Family Bilingual Catholic School, St. George Parish School, St. Paul School, St. Therese Catholic Academy, and Visitation Catholic STEM Academy—to empower students, families, and the wider community.

"Becraft Scholars is unique in that the program goes beyond scholarship, focusing heavily on empowerment and belonging," said Alana Bell, Becraft Scholars program director. "Our partnerships with school leaders help ensure that not only our scholars thrive in their learning environments but that this collaborative effort positively impacts the entire school community."

At St. George Parish School, Becraft Scholars is all about creating partnerships between the families and the school. "The Becraft Scholars Program provides families with access to a life-changing experience," said Monica Wingard, principal of St. George. "First, it gives tuition assistance for a rigorous education that is steeped in strong Catholic values and nurtures the whole child. Just as importantly, it provides families a warm and supportive community of like-minded families and educators whose communal energies center on the dignity, growth, and continued success of each and every student. Becraft Scholars uplifts families and helps them build their network of support as they raise their children to be successful, independent adults!"

In the coming years, Alana plans to expand the Becraft Scholars program and welcome more cohorts of students into this growing community. "We plan to continually find new and culturally responsive ways to empower our scholars and families," Alana said.



Celebration of Light 2021 Rocks the (Virtual) House!

Working Through extraordinary challenges.

The first fully virtual Celebration of Light 2021 fundraising gala was a rousing success thanks to our incredible donors! Despite a difficult year, Fulcrum raised more than \$2 million in support of Catholic schools, students, and educators.

“Fulcrum’s 2021 Celebration of Light surpassed all expectations!” said Tony Audino, chair of Fulcrum’s Board of Trustees. “After almost a year of quarantining, it was a true joy to reconnect with Fulcrum friends via our virtual event and celebrate the inspiring achievements of our Catholic schools. Fulcrum’s donors truly made an impact on Catholic education, coming together to support Fulcrum’s work in

the Archdiocese of Seattle. We could not have done this without you!”

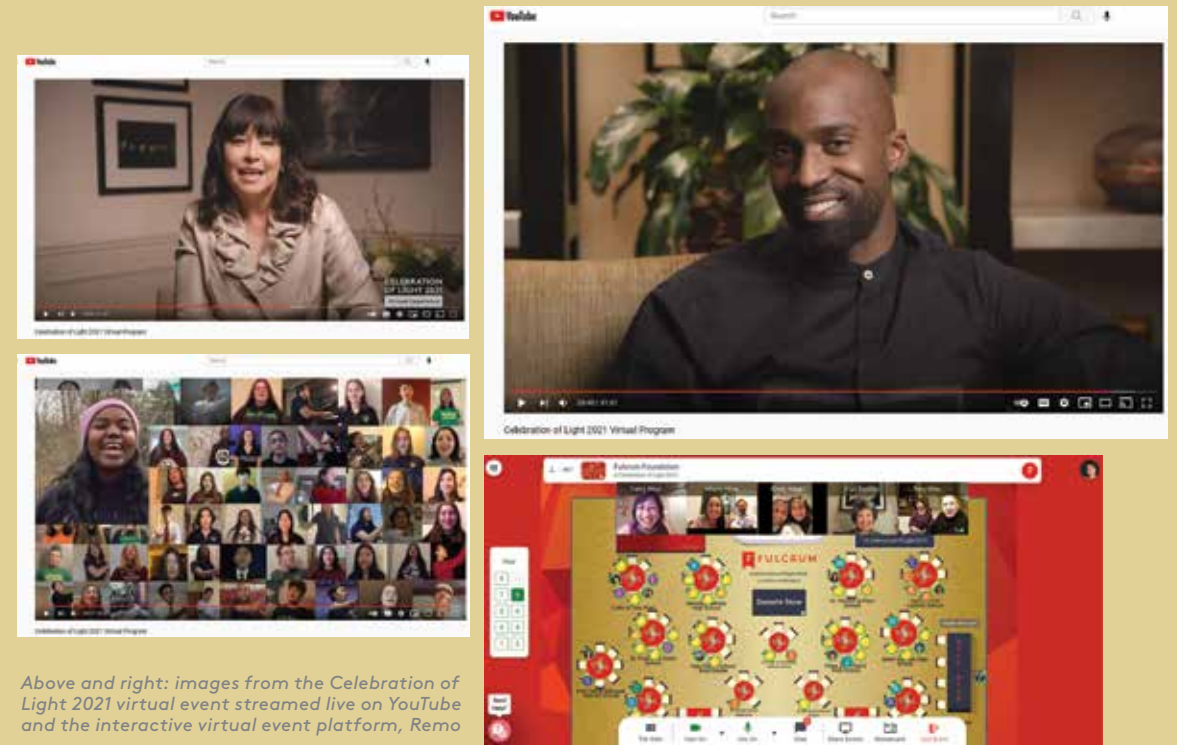


The 2021 Celebration of Light honored Tom and Jan O’Callahan with the prestigious Archbishop’s Award for their leadership with the Fulcrum IT Network

Modernization Fund. Tom and Jan’s hard work over the last five years positioned many archdiocesan schools to quickly transition from in-person to remote learning when the pandemic hit.

The virtual Celebration of Light also saw Fulcrum’s first-ever \$100,000 sponsor, Timmie Hollomon! Fulcrum thanks all our amazing sponsors for their support this year!

Below: the Fulcrum team gets ready to launch the virtual event



Above and right: images from the Celebration of Light 2021 virtual event streamed live on YouTube and the interactive virtual event platform, Remo

Celebration of Light corporate sponsors and community leaders support the mission of the Fulcrum Foundation by underwriting costs of the annual fundraising gala.

Timmie Hollomon

Dick & Sharon Abrams
Hoban Family • Luger Family

Edith & Ray Aspiri • Andrew & Courtney Heily • David & Shelley Hovind • Michael & Mary Lee
Julie & Dan Coleman • Ferry Family Charitable Foundation • Sacred Heart Parish
Saint Martin’s Abbey • Tony & Michelle Audino • Kevin & Julie Cipoletti
Richard & Sheryl Gudaitis • Mike & Mindy Morgan • Tucci Family





Closing In On the Finish Line

Uplift, The Fulcrum Campaign for Catholic Education, closed in on its \$66 million goal. The comprehensive campaign, which began in 2015, raised just over \$61 million by the end of fiscal year 2021, with 3,400 donors taking part in the fundraising.

In addition to supporting Fulcrum's three main programs—tuition assistance, school partnerships, and leadership training—the campaign will help fund the foundation's newest programs: the Becraft Scholars Program and the Early Childhood Education Grant Program.

"We are so proud of our Fulcrum community that has stepped up beyond anyone's expectations during this past year of unprecedented challenges," said Shawn and Kathie Hoban, co-chairs of the campaign. "As we approach our \$66 million goal, we are confident that our supporters will continue to carry us above our target, allowing generations of families to enjoy the blessings of a Catholic school education. We could not have accomplished this without the great effort, expertise, and support of the campaign leadership, volunteers, Fulcrum staff and, of course, the many donors who have stretched during these challenging times to bring our campaign to new levels of success. Thank you all for your support!"

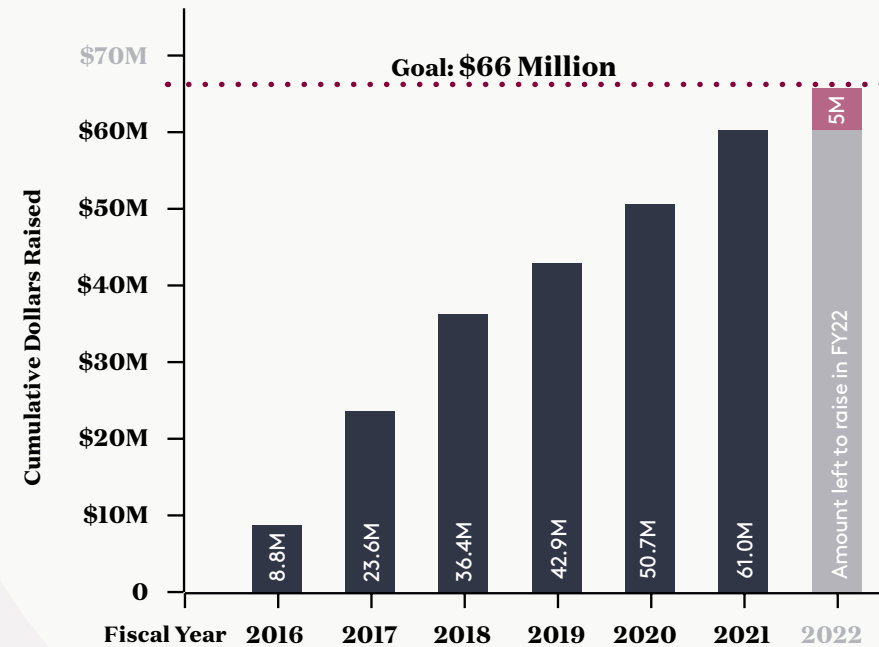
Seeing a promising future.

"With the early leadership of Joe and Jenn Sprague, and now with the Hobans, we project to reach and hopefully surpass our campaign goal by the end of the year," said Julie Coleman, Managing Director, *Uplift* campaign.



For more information about the Uplift campaign, contact Julie Coleman at julie.coleman@fulcrumfoundation.org.

Donor Commitment



A Message from the Campaign Co-Chairs

The Fulcrum Foundation was founded in 2002 to preserve the legacy of the Catholic education that we inherit. It ensures diversity and makes sure the gift of Catholic education is available to students for years to come. But supporting Fulcrum is about much more: When we do for others who need our help, we are responding to God's call to serve those most in need, we build better communities and we prove that when called to act, we were there, and responded. We stand on the shoulders of giants, after all. They sacrificed when they were called so that Catholic education was there when we needed it. It is our turn now.

How will you respond?

That is really the question. We hope your answer is an enthusiastic yes and that you'll join us in this campaign.

The Hoban Family
Shawn & Kathie
Margaret & Tom

Transform Catholic Education

Uplift
The Fulcrum Campaign for Catholic Education

Uplift Campaign

UPLIFT CAMPAIGN GOAL: \$66 MILLION

Raised through major campaign gifts, legacy gifts, and annual contributions to fund Fulcrum's mission.

Access to Opportunity
Catholic's of learning faith, art & science best for families to this

Revitalizing Schools
Catholic from back the

Transformational Leaders
All our student excellent Catholic the kind of possible with & principals We must talent school and to the



2020/21 Year In Review

Adapting to life.

JUL
2020

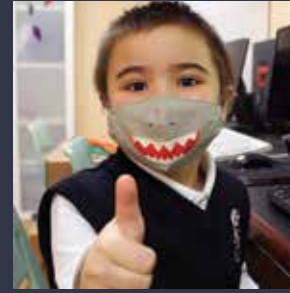
Christina Payne joins Fulcrum as the foundation's new communications manager.

Fulcrum provides funding for the Office of Catholic Schools' new director of early childhood education, Dave Mayer.

AUG
2020

Loren Skaggs becomes Fulcrum's first marketing director, overseeing Fulcrum's marketing team and implementing a new marketing plan for the foundation.

Fulcrum begins awarding the first round of COVID-19 Emergency Relief Fund grants to Catholic schools in the Archdiocese of Seattle. In the first round of funding, Fulcrum disburses \$3.5 million through 61 grants.



NOV
2020

The Father Patrick Ritter Endowment Fund is announced to honor the life and legacy of Fr. Ritter, who was a founding board member of Fulcrum and the pastor of Sacred Heart Parish for many years before passing away in July 2020. The endowment will fund scholarships for Catholic school students for generations to come.



JAN
2021

The fully virtual Celebration of Light is a resounding success. Despite the difficulties of a global pandemic, Fulcrum donors raised over \$2 million in support of Catholic schools!

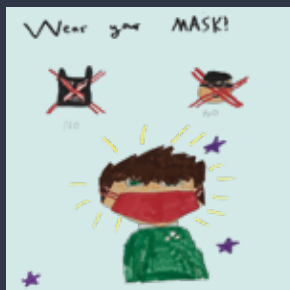
Kendra Reiser becomes the new chair of Amici, Fulcrum's young professionals program. Kendra plans to carry on the Amici legacy of service to archdiocesan schools and create opportunities for members to fundraise, network, and build community.

FEB
2021

Fulcrum launches the Becraft Scholars Program in partnership with the Ferry Family Charitable Foundation. Alana Bell joins Fulcrum as the new Becraft Scholars program director, bringing an impressive background in diversity, equity, and inclusion work.

MAR
2021

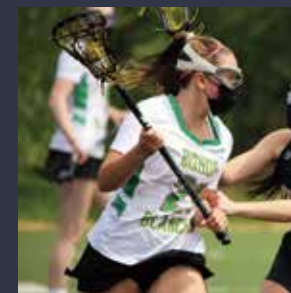
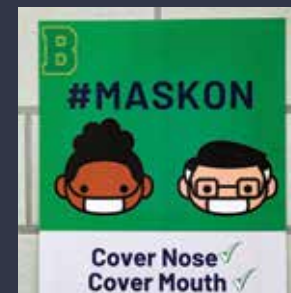
Mary Lee is appointed the new co-chair of the Ambassador Program, which aims to build relationships between Fulcrum and the archdiocesan school communities through school visits and roundtable discussions.



APR
2021

Fulcrum creates the Early Childhood Education Grant application process, making it easier for schools to apply for and receive funding for critical ECE programs.

Fulcrum awards the second round of COVID-19 Emergency Relief Fund grants, totaling \$1.1 million through 42 grants.



JUN
2021

The Puget Sound Business Journal names Fulcrum #6 on the annual largest benefits event list, moving the foundation up four spots from 2019. Fulcrum also ranked #22 in the journal's list for largest nonprofits.



Financials Fiscal Year 2020/21

Fulcrum Foundation Highlights of the Statement of Activities

(Dollars in thousands)

	Fiscal Year Ending 6/30/21	Fiscal Year Ending 6/30/20	Fiscal Year Ending 6/30/19	Net Change 6/30/21 vs 6/20/20	Net Change 6/30/20 vs 6/20/19
OPERATING INCOME					
General Gifts	\$1,671	\$1,714	\$1,393	\$(43)	\$321
Celebration of Light (net of expenses)	\$1,902	\$1,831	\$1,843	\$71	\$(12)
TOTAL OPERATING INCOME	\$3,573	\$3,545	\$3,236	\$28	\$309
INVESTMENT EARNINGS & OTHER REVENUE					
Endowment and Other Earnings	\$12,613	\$153	\$2,487	\$12,460	\$(2,334)
Capital Campaign (net of expenses)	\$5,905	\$3,399	\$480	\$2,506	\$2,919
PPP Grant	\$168	—	—	\$168	—
TOTAL INVESTMENT EARNINGS & OTHER	\$18,686	\$3,552	\$2,967	\$15,134	\$585
PROGRAM EXPENSES					
Tuition Assistance*	\$3,019	\$2,451	\$2,684	\$(568)	\$233
School Grants*	\$2,479	\$3,457	\$1,943	\$978	\$(1,514)
COVID Relief Grants*	\$4,645	—	—	\$(4,645)	—
Leadership Grants*	\$91	\$84	\$165	\$(7)	\$81
Program Administration	\$300	\$292	\$181	\$(8)	\$(111)
TOTAL PROGRAM EXPENSES	\$10,534	\$6,284	\$4,973	\$(4,250)	\$(1,311)
SUPPORT SERVICES EXPENSES					
General Administration	\$767	\$513	\$510	\$(245)	\$(3)
Fundraising Expenses	\$402	\$445	\$486	\$43	\$41
TOTAL SUPPORT SERVICES EXPENSES	\$1,169	\$958	\$996	\$(211)	\$38
NET CHANGE IN NET ASSETS	\$10,556	\$(145)	\$234	\$10,701	\$(379)
Net Assets Beginning of Year	\$50,994	\$51,139	\$50,905	\$(145)	\$234
NET ASSETS END OF YEAR	\$61,550	\$50,994	\$51,139	\$10,556	\$(145)

Fulcrum Foundation Highlights of the Statement of Financial Position

(Dollars in thousands)

	As of 6/30/21	As of 6/30/20	As of 6/30/19	Net Change 6/30/21 vs 6/20/20	Net Change 6/30/20 vs 6/20/19
Cash and General Investments	\$9,223	\$11,058	\$9,395	\$(1,835)	\$1,663
Contribution Receivables	\$6,053	\$5,674	\$5,027	\$379	\$647
Endowment Investments	\$51,423	\$38,900	\$40,303	\$12,523	\$(1,403)
TOTAL ASSETS	\$66,699	\$55,632	\$54,725	\$11,067	\$907
Grant and Other Payables	\$5,149	\$4,638	\$3,586	\$511	\$1,052
Net Assets	\$61,550	\$50,994	\$51,139	\$10,556	\$(145)
TOTAL NET PAYABLES & NET ASSETS	\$66,699	\$55,632	\$54,725	\$11,067	\$907

*includes designated pass-through gifts and non-program grant funding

"When this is over,



may we never again
take for granted

A handshake with a stranger

Full shelves at the store

Conversations with neighbors

A crowded theater

Friday night out

The taste of communion

A routine checkup

The school rush each morning

Coffee with a friend

The stadium roaring

Each deep breath

A boring Tuesday

Life itself.

When this ends
may we find
that we have become
more like the people
we wanted to be
we were called to be
we hoped to be
and may we stay
that way—better
for each other
because of the worst."

—Laura Kelly Fanucci

Circle Time Center

Today is **September 22, 2020**

Days of the Week



What's the Letter?



Rhyme Time



Tactile Letters

Calendar Pieces

What's the Weather?



Let's Count



Learning new skills.

Cumulative Giving The Fulcrum Foundation proudly recognizes these major contributors whose sustained giving over time demonstrates their generous and long-standing commitment to Catholic education. This listing includes cash gifts and irrevocable planned gifts.

† indicates donor is deceased

\$12,000,000 or more
Theodore† and Constance Hossfeld†

\$7,500,000 to \$11,999,999
Bill & Melinda Gates Foundation

\$3,000,000 to \$7,499,999
Gift of Faith
Pat and Mary Ellen Hughes
The Norcliffe Foundation
Shea Family Charities
St. James Cathedral Parish

\$2,000,000 to \$2,999,999
Anonymous
Richard and Sharon† Abrams
Archdiocese of Seattle
Tony and Michelle Audino
Elizabeth Dorothea Eckmann†
The Lee Family
Rhoady† and Jeanne Marie Lee†
Charles and Yvonne Pigott
Frost and Margaret Snyder
Foundation
Ann Wyckoff

\$1,000,000 to \$1,999,999
Anonymous (5)
The Ferry Family Charitable
Foundation
Richard and Maude Ferry
Honorable James P. Healy†
Jim† and Timmie Hollomon
Mary and Michael Lee
The Luger Family
The Office for Catholic Schools
Michael and Marnie Schreck
Schwab Charitable Fund
The Seattle Foundation
St. Frances Cabrini School

\$750,000 to \$999,999
Anonymous
Pierce County Deanery
St. Joseph School, Seattle
Michael and Mary Jo† Tucci

\$500,000 to \$749,999
Academic Assistance Fund
Bertha Marie Allen†
Edith and Ray Aspieri Family
Richard† and Mary Ann Boulanger
Pat and Shannon Cahill
Darrell† and Anne Jesse
The Magnano Family
Richard Mahoney and Lois Hartman
Deacon Larry and Karen McDonald
Pierce County Association of
Catholic Education
James and Margie Rose
Doug† and Ty Scheumann

\$250,000 to \$499,999
Anonymous (5)
J. Stephan and Linda Banchemo
The Boeing Company Gift Matching
Program
Vince and Kelly Bosa
Mark Busto and Maureen Lee
Christ Our Hope Parish
Coleman Family Foundation
Richard† and Bridget Cooley
Diagnos-Techs, Inc.
Fidelity Charitable Gift Fund
Bill and Roni Grady
Steve and Jo Marie Hansen
George and Debra Hofbauer
David and Shelley Hovind
Lakeside Industries
Rhoady Lee III and Alan Gartenhaus
Sharon Lee
Tim and Tina Lee
Elizabeth Miller
NAIOP Washington State Chapter
Mary Pat and John Osterhaus
Michael Patterson†
Seton Catholic College Preparatory
High School
John† and Rose Southall
Joe and Jenn Sprague
Philip VanDerhoef and Kathleen
McKay
Vietnamese Martyrs Parish

\$100,000 to \$249,999
Anonymous (5)
Assumption - St. Bridget School
Maralea and Joseph Binz
Bishop Blanchet High School
Deacon José† and Lucy Blakeley
Michael and Mary Rose Blatner
James and Donna Boulanger
Bob and Julie Breshock
Dan and Pat Brotherton

Most Reverend Alexander J. Brunett†
Deborah Buccola
Suzie Burke
Dan and Julie Coleman
Lucio and Marta Dalla Gasperina
Jim and Mary Deviny
Eastside Catholic School
The Society of Friends of St. Patrick
Kurt and Marie Geisel
Gonzaga University
Margaret (Peg) Haggerty
Hardgrove Foundation
The William Randolph Hearst
Foundation
Clare Henry and David Pultorak
Ruth Vernier Hirsh† and Blake Hirsh†
Shawn and Kathie Hoban
Tom and Margaret Hoban
Holy Names Academy
Howe Foundation
Anne M. Jenkins
Steve and Anne Knight
Liliane Konopka†
The Lundberg Family Giving Fund
Michael and Michelle Maher
James and Sheila Mallahan
David and Laura Matter
Gregory and Anne Marie May
Jack McCann Company, Inc.
Daniel and Andrea Merlino
Andrew and Lisa Miller
Vincent and Catherine Mullally
The Napoleon Company
Gavin and Margaret O'Brien
Michael and Cindy O'Brien
Our Lady of Fatima Parish School
Patterson Buchanan Fobes & Leitch,
Inc., P.S.
Tom and Brooke Pigott
Peter and Molly Powell
Rev. Stephen C. Rowan
David and Sandra Sabey Family
Saint Martin's University
Frederick and Connie Scheetz
Gary and Mimi Schulze
Seattle Preparatory School
Seattle University
Jo-Anne Shanahan
James and Janet Sinegal
St. Charles Borromeo Parish
St. Mary Parish, Seattle
St. Patrick Parish, Seattle
Dan† and Theresa Twining
University of Portland
Scott and Michelle Ventoza
Edward C. Wartelle, Sr.†
Patrick and Mary Welch
Pete and Karen Wickstrand



Peace begins with a smile.
—St. Teresa of Calcutta

Annual Contributors

We are grateful for the annual contributors who support the programs and operations of the Fulcrum Foundation. The following includes all cash gifts to the Fulcrum Foundation between July 1, 2020 and June 30, 2021.

● signifies 10 or more gifts since 2002 ● new donor ● Celebration of Light Sponsor † indicates donor is deceased

\$1,000,000 or more
 Archdiocese of Seattle ●
 Rhoady† and Jeanne Marie Lee† ●
 The Norcliffe Foundation ●

\$500,000 to \$999,999
 Richard and Sharon† Abrams ● ●
 Tony and Michelle Audino ● ●
 Ann Wyckoff ●

\$200,000 to \$499,999
 Pat and Mary Ellen Hughes ●
 Charles and Yvonne Pigott ●
 Schwab Charitable Fund ●
 Shea Family Charities ●

\$100,000 to \$199,999
 Anonymous
 Mary Ann Boulanger ●
 Dan and Julie Coleman ● ●
 Richard and Maude Ferry ●
 Fidelity Charitable Gift Fund ●
 Timmie Hollomon ● ●
 Liliane Konopka† ●
 Frost and Margaret Snyder Foundation ●
 St. James Cathedral Parish ●

\$50,000 to \$99,999
 Anonymous (4)
 Boulanger Family Foundation
 The Ferry Family Charitable Foundation ● ●
 Bill & Melinda Gates Foundation
 Clare Henry and David Pultorak ●
 Mary and Michael Lee ● ●
 The Magnano Family ●
 The Napoleon Company ● ●
 Ty Scheumann ●
 Michael and Marnie Schreck ●
 The Seattle Foundation ● ●
 Joe and Jenn Sprague ●

\$25,000 to \$49,999
 Anonymous
 James and Donna Boulanger ●
 Catholic Community Foundation ●
 Christ Our Hope Parish ●

Jim and Mary Deviny ●
 Steve and Jo Marie Hansen ●
 Hoban Realty Interests LLC ●
 Shawn and Kathie Hoban ● ●
 Tom and Margaret Hoban ● ●
 David and Shelley Hovind ● ●
 Steven Isaacson
 Steve and Anne Knight ● ●
 The Luger Family ● ●
 Andrew and Lisa Miller ●
 Vincent and Catherine Mullally ●
 Olympic Eagle Distributing
 Pierce County Deanery ●
 Peter and Molly Powell ●
 Stuart and Lee Rolfe
 Jo-Anne Shanahan ●
 Matthew and Ann Shanahan ●
 Philip VanDerhoef and Kathleen McKay ●
 Pete and Karen Wickstrand ●

\$10,000 to \$24,999
 Agape
 Anonymous (2)
 Advisors Charitable Gift Fund
 Edith and Ray Aspiri Family ● ●
 Assumption - St. Bridget School ● ●
 Fred and Paula Bevegni
 Maralea and Joseph Binz ●
 Bishop Blanchet High School ● ●
 Michael and Mary Rose Blatner ●
 James and Marie Borgman
 Bob and Julie Breshock ●
 Suzie Burke ●
 Irene Campbell
 William and Kathleen Colleran ●

Kurt and Kim Daviscount
 Eastside Catholic School ● ●
 Mark and Vickie Fanning
 Estate of Florence B. Gallo ●
 James and Geraldine Godfrey
 Greater Horizons
 Margaret (Peg) Haggerty ●
 Hardgrove Foundation ●
 Andrew and Courtney Heily ●
 Charlie and Lisa Herb
 Tom and Mary Herche ●
 Joseph Ittes and Janene Siers ●
 Ozo and Beth Jaculewicz ● ●

The James and Geraldine Godfrey Foundation
 Anne M. Jenkins
 Shirley Kapala
 The Lundberg Family Giving Fund
 Tom and Rowayne Maguire ●
 Michael and Michelle Maher ●
 Richard Mahoney and Lois Hartman ●
 James and Sheila Mallahan ●
 Frank and Pam McKulka
 Paul and Darlene McTaggart
 Morgan Stanley GIFT Fund ●
 Jim and Bridgett Neal
 Michael and Cindy O'Brien ●
 O'Dea High School ● ●
 Our Lady of Fatima Parish School ●
 Sacred Heart Parish, Bellevue ● ●
 Saint Martin's University ● ●
 Stephen and Diana Schiro ●
 Seattle Preparatory School ● ●
 Seattle University ● ●
 The Shields Family Fund ●
 Mary Snapp and Spencer Frazer ●
 Karleen Snetsinger
 Rose Southall ●
 St. Joseph School, Seattle ● ●
 Michael Tucci, Sr. ● ●
 Dan† and Theresa Twining ●
 Vanguard Charitable Endowment Program ●
 Scott and Michelle Ventoza ●
 Vietnamese Martyrs Parish ●
 Washington Trust Bank ●
 Patrick and Mary Welch ●
 Tim and Jackie Welsh ●
 Susan Wyckoff
 Joe and Marianne Zech ●

\$7,500 to \$9,999
 Bellarmine Preparatory School ● ●
 Charities Aid Foundation of America
 Kevin and Julie Cipoletti ●
 Ignacio and Krystyna Dávila
 DeAnn and Frank Feeman ●
 Forest Ridge School of the Sacred Heart ● ●
 Rick and Nancy Green ●
 Holy Names Academy ● ●
 Northwestern Mutual Foundation
 Patriot Fire Protection, Inc ● ●

Very Rev. Michael G. Ryan ●
 Mark and Alice Shaw ●
 St. Patrick Parish, Seattle ●
\$5,000 to \$7,499
 Anonymous
 Dean and Mona Anderson
 Archbishop Thomas J. Murphy High School ● ●
 The Ash Family Foundation
 Ayco Charitable Foundation ●
 The Bank of America Charitable Foundation
 Lucy Blakeley ●
 Martha Bolen ●
 John and Diahann Braseth
 Joan Brown
 Bruce Company ●
 Brian and Conne Bruce ●
 Buriem Toyota ●
 Jonathan and Nancy Cluts
 Peter and Pam Comfort
 Patrick and Jean Corr ●
 Stephen Cummins ●
 Chris and Carolyn Eagan ●
 Fidelity Brokerage Services, LLC
 Leo & Katherine Gallagher Charitable Foundation ●
 Leo and Katherine Gallagher ●
 George and Maureen Gilmore ●
 Joe and Heidi Gogal
 Gonzaga University ● ●
 Gordon Woodside/John Braseth Gallery
 Mark Gray and Erin Fowler
 Richard and Sheryl Gudaitis ● ●
 Regan Hurley ●
 Robert and Annmarie Kelly ●
 Kennedy Catholic High School ● ●
 June Kennedy ●
 Andrew and Joanne MacDonald ●
 Todd and Jessica Madison
 Rev. Paul Magnano ●
 Karen Matthews ●
 Daniel and Andrea Merlino ●
 Paul Miller ●
 Michael and Mindy Morgan ● ●
 Allen and Inge Morris ●
 Peter Mullin ●
 James and Theresa Murphy
 Ed and Rebecca Nightingale

Annual Contributors (cont.)

Nordstrom Employee Charitable Match Program
Miles Otoupal
Patterson Buchanan Fobes & Leitch, Inc., P.S. ●●
Brandon and Janet Pedersen
John and Gail Quigg ●
Mike and Becky Ronan
Rev. Stephen C. Rowan ●
Jay and Carla Rudd ●
Gregory and Tracey Russell
Sacred Heart School ●●
Per and Maribel Saelid
Paul and Debbie Sauvage ●
Vivian and Joe Shannon
Shea Homes, Inc. ●
Sisters of Providence ●
St. Anne School ●●
Bill and Katie Teplicky
The TEW Foundation
Tommy Bahama ●
UBS
Jim and Mary Ellen Weber
Dale and Mary Winter
Zeacon ●●

\$2,000 to \$4,999

Anonymous (7)
Jeff and Molly Akers ●
Gregg and Dora Alex
American Endowment Foundation
Associated Catholic Cemeteries ●
Robert and Pauline Bach
Bank of America ●
John Bauer
Colleen and Jeff Bell ●
Deborah Buccola
Paul and Shelly Capeloto



Tim and Joanna Collins
James and Kathleen Conklin ●
John and Angela Connelly
Bridget Cooley ●
Costco Wholesale ●
Jerry and Mary Anne D'Ambrosio ●
Patrick and Helen Damitio
Shannon and Mike Danitz ●
Israel Rodrigo and Kristina Dermody

Matthew and Kristin Dixon ●
Max and Andrea Effgen ●
Frank Esposito ●
FACTS Management Company ●●
Ann Alokolaro and Patrick Fennessy ●
Rick and Patti Fersch ●
Peter and Mary Ann Fessler
Larry and Kelley Garcia
Kurt and Marie Geisel ●
Goldman Sachs Philanthropy Fund
Blaise and Molly Goudy
Roy F. and Kathleen M. Heyndrickx ●
George and Debra Hofbauer ●
Anthony and Caroline Holter ●
Holy Family Parish School, Kirkland ●
Holy Rosary Parish, Seattle ●
Andy Hoyal and Linda Walton
Tim and Becky Hunt ●
Immaculate Conception Parish, Seattle ●
Douglas and Diane Irvine ●
JP Morgan Chase Foundation
John and Jo-Ann Kelly ●
George and Mary Kenny ●
Joanne Knight ●
Ryan and Christen Lambert ●
Cynthia Lamothe ●
Sean Lamothe
Grace Lewis
David and Mary Kay Livingston ●
George and Nancy Lobisser
Wilfrid and Patricia Loeken ●
Gary and Betty Loverich
Loretta Mary Luger ●
Joseph and Pamela MacDonald ●
Mary Magnano Smith ●
Steve Malshuk and Catherine Banhero ●
Jason and Kerrie Mayans ●
James and Judy McAteer ●
Rev. J. Patrick McDermott ●
Kate McIntyre ●
Gary and Donna Merlino ●
Kevin and Betty Mest ●
Mark and Kris Mitchke
Phil and Ginny Morrissey ●
Steve and Lynette Muenzberg
Pat and Linda Naughton ●
Nelnet ●
Northwest Catholic Magazine ●
Paul and Colleen Nowak
Gavin and Margaret O'Brien ●
Albert and Susan Ocoma ●
O'Connell Family Foundation ●
Roger and Sheron O'Connell ●

Peter and Julia Odland
The Office for Catholic Schools ●
James and Young O'Hanlon ●
Robert and Linda Panowicz ●
Anthony and Tanya Paszkeicz ●
Bertie Perry ●
Peter and Tina Petesch ●
Joseph Petschl ●
James and Ruth Powers ●
William and Carolyn Protz
Michael Scoggins and Mary Pugh
Rev. Michael Radermacher ●



Robert and Patricia Reverman
Toby and Sue Richards
K. Penney Sanders ●
Frederick and Connie Scheetz ●
Anna Scrivanich ●
Seton Catholic College Preparatory High School ●●
Boyd and Mikki Sharp ●
Steve and Julie Shaw
Marilyn Sherry ●
David and Ann Shikany ●
Jerome and Shirley Soler
St. Cecilia Parish ●
St. Charles Borromeo Parish ●
St. George Parish School ●
St. George Parish ●
St. John Catholic School ●●
St. John the Evangelist, Seattle ●
St. Martin's Abbey ●
St. Mary Magdalen Catholic School ●
St. Patrick Catholic School ●
St. Therese Catholic Academy ●●
Starbucks Matching Gifts Program
Daniel Stoner and Anne Santee-Stoner
Marion Sullivan ●
T. Rowe Price Program for Charitable Giving
Dave and Jennifer Tawatao
Lawrence and Jane Treleven ●
Michael and Michelle Tucci ●
James and Laura Twining ●
David and Tara Uffelman

Dick and Linda Vacca
Donald J. Verfurth ●
Linda Schutte Wager ●
Tony and Cathy Wise ●
David and Laura Young
YourCause, LLC ●
Daniel and Maribel Zarzar

\$1,000 to \$1,999

Anonymous (3)
Diane Adam
Matt and Erin Aitken
Therese Allin ●
Guy and Katherine Alloway
American Gift Fund ●
Tom and Beth Anderson
Angelo Foundation
Rick and Marguerite Angelo
Arthur J. Gallagher Risk Management Services, Inc.
Craig and Angela Averman
Brenda Bannon
Very Rev. Anthony Bawyn ●
Brent Beabout ●
Brian and Jennifer Beach
Robert and Cindy Blais
Brian and Wendy Blank
Brian and Erin Bonipart
Jerome and Carolyn Bosch
Evan and Lauren Boulanger
Sharyn Bozied
Molly Brackett ●
Paul and Colleen Brajcich ●
Bill and Jacqueline Brennan ●
John and Liz Brennan
Jo Cameron
Thomas and Stephanie Casey
Joanne Cecchini ●
Gerard Centioli
John and Stephanie Champion
Dave and Kristy Charles ●
Ken and Sue Christianson ●
Gavin Cipoletti
Rev. Timothy Clark, O.C.S.O.
Mark and Mary Comstock
Steve and Pam Cory
Mike and Sharon Cowley
Craves Family Charitable Foundation
Geraldine Craves ●
Monteze Curry
Dennis and Sheila Dahl ●
Bob and Sharon Dahmen ●



Annual Contributors (cont.)

Tom and Nancy Danaher
Bruce and Mona Davies ●
Davis Family Legacy Group (Kapela Family) ●
Joe and Lisa Davisson
Leon and Suzette de Turenne
Nick and Maureen De Vitis ●
Edward DeAlbuquerque
Melvin and Sheila Dennis
Charles Dickey and Sheila Wyckoff-Dickey ●
Matt and Maggie Diefenbach ●
Bob and Cristina Dugoni ●
Elliot Bay Auto Brokers ●●
Michael and Angela Ensminger
John and Margaret Ernest
Peter and Sharon Faricy
Timothy and Joanne Farmer ●
Patrick and Deborah Feist ●
Chris and Ingrid Flaot
Mike and Diane Flynn
Nicholas and Rachel Ford
Lee and Vicki Forte
Katie and Dominique Fourcin
Allison Frey
Stephanie Frey
Gee Automotive Companies ●
Michael and Teresa Gillett ●
Graham-Pelton Associates ●●
Regina Green ●
Matthew and Katie Griffith
Dan Grohl and Alice Mullin ●
Janean Grosinger
Grant and Nicole Gummow
Barry and Sandra Hachler
Kathi L. Hand ●
Jack and Myra Hanover
Brian Hanson
William and Molly Hastings ●
Rev. Richard Hayatsu ●
Mike and Shirley Hemmer
Sean and Erin Henderson
Todd and Stephanie Henderson
Jon and Jill Herendeen
David and Julie Herness
Chris and Joni Hoffman
Paula Holmes ●
Edward and Phyllis Hopfner ●
Ignatius Ohno Foundation ●
Very Rev. Timothy W. Ilgen ●
Immaculate Conception Regional School ●
Richard and Judy Isaacson ●
Daniel Jellen and Karen Keyes-Watkins ●
Patricia Jennings
Amy Jensen ●
Anne Jesse ●
Johnson & Johnson
Kevin and Tricia Kealy
Mark and Natalie Keilholz ●
Deacon Dennis and Mary Kelly

Susan Kilbane
Justyna and Bryan King
Daniel Kocer and Diane Siderius Kocer ●
Stephen and Carol Koehler ●
Chris and Christine Kradjan
Brent and Lisa LaMotte
Jim and Sue Lane
Tim and Tina Lee
Don and Carla Lewis ●
Tom and Mary Pat Lord ●
Deacon Craig and Marti Lundberg ●
David and Kathy Lundy
Mark and Emily Manning
Patrick and Judy Manza
Corey and Beth Martin
Troy and Oanh Martin
David and Laura Matter ●



Dave Mayer ●
Stafford Mays and Laurie Black
Christine McCabe
Steve and Nancy McCaffray
Tyler and Helen McClenahan
TJ and Soozie McGill ●
Sean McGraw ●
Joe McIntyre
Robert and Carol McLaughlin ●
Terry and Dorene McTigue ●
Mercer ●
David and Mary Meucci
Dan Meyer and Sally Hewett
Elizabeth Miller ●
Robert and Ann Modarelli ●
Daniel and Maryann Montandon ●
Mary Moran
Michael and Kristina Moran ●
Deacon Pierce and Mary Anne Murphy
Tracy and Barbara Neighbors
Thomas and Elizabeth Newman
Donald and Melissa Nielsen ●
Thomas and Christine O'Connor ●
Yoshiro and Karen Ohno ●
Timothy and Lisa O'Keefe ●
Olympus Press ●●
James and Ann O'Neil
David and Peggie Orem
Bob and Annette Parks ●

John and Carol Penny ●
Ewing Philbin ●
Sandy Phillips ●
Gil and Amelia Picciotto
Bruce and Katie Pieper ●
John and Lilli Pietromonaco ●
The Pless Family ●
Peter and Julie Prepotente
Rodney and Constance Proctor ●
Sarah Radecki ●
Jason Burnett and Romina Rafer
Roland and Vivian Ramirez
Andrew and Keri Read
Felicia and Martin Read
David Redenbaugh ●
John and Diane Redenbaugh ●
Matt and Karen Reinke
Michael and Julie Rice
John and Michelle Riel
Victoria Ries and Samuel Saracino ●
Gwen Rodrigues ●
Albert and Vicki Rosellini
Dino and Terry Rossi
Barbara Rush ●
Robert and Sara Rush
Michael and Shelly Sailer
Tim and Mary Kate Salley ●
Bruce and Mary Sangeorzan
Jim and Shannon Schneider
Tom Schwab ●
M. Peter and Connie Scontrino ●
Peter and Kristin Scroggs
Jim and Carmen Sepic ●
Gerald and Jan Shaw
David and Margaret Simpson
William and Alessandra Spencer
St. Anthony School ●



St. Frances Cabrini School ●
St. Joseph School, Issaquah and Snoqualmie ●
St. Nicholas Catholic School ●
St. Peter Parish, Seattle ●
St. Philomena Catholic School ●
Joan Steberl ●
Jim Sund and Dr. Anne Mulligan



Anand and Kelly Surapaneni ●
Kathryn Sweyer ●
Tina and Jay Tsao
Paul and Hailey Twining
Adrienne Udelhoven ●
David Unger and Anna Horton
United Way - King County ●
Andrew and Grace Valrosa ●
Jim and Jeanne Van Tighem ●
Rev. Thomas Vandenberg ●
Blaine and Jo VanDerSnick ●
Dale Vogel and Nancy Bird ●
Benjamin Wahlman
Michael Wampold ●
Jim Crowley and Laura Williams
Hank and Catherine Worden ●
David and Sally Wright
Richard and Kerry Wyman
Very Rev. Gary M. Zender ●
John and Jackie Zevenbergen
Larry and Jan Ziels

\$500 to \$999

Anonymous (3)
Frank and Mary Frances Abbott
Paul and Cristi Aigner
Madeline Ancelard
Erich Andersen and Anne Read-Andersen
Brian and Jodie Anderson
Dan and Hana Anderson
Keith and Nancy Anderson
Jason Appelgate ●
Sherry Atterbury ●
Elizabeth Ayer ●
William and Marilyn Bailey ●
Bob and Kathy Bethke
Brigette Blair
Kevin and Katy Blair
Sean and Drew Blazey
BNY Mellon Charitable Gift Fund ●
The Boeing Company Gift Matching Program ●
Ray and Barbara Bolanos
Richard and Jolene Boyle ●
DeAnna Bridenback
Larry Brouse ●
Debbie Brule
Kelly and Christina Burnaby ●
David and Jenney Burroughs ●
Michael and Carol Caffisch

Annual Contributors (cont.)

Chris Carver and Mary Mullaney
 John and Deb Casper
 Gregory and Darlene Chan ●
 Bruce and Sarah Chapman
 Rev. Cal Christiansen ●
 Sally Sue Coleman
 Jim and April Collier ●
 Combined Fund Drive ●
 Tim and Tracy Conway ●
 Michael and Michele Corey
 Sten and Maryann Crissey
 John and Diane Cronin
 Peggy Crowley
 Dan and Cleo Cummins
 Ed Curtis and Leslie Wagner ●
 Mitch and Mary Czuk
 Monica and Greg Davis
 Monica Bieniosek Davis
 Chad and Teresa Day
 Julio De Villasante and Ana Sainz
 Thomas and Diane DeBord
 Jackie Degel ●
 Erik and Audrey Demaree
 Rev. Gordon Douglas
 Rev. Oliver F. Duggan ●
 Rev. James Eblen
 Most Reverend Eusebio Elizondo, M.Sp.S. ●
 Michael and Barbara Evans
 William and Christine Fenkner ●
 Patrick and Roxanne Finney ●
 Sarah Finney
 Chad and Colleen Fisher
 Kevin and Colleen Flanigan ●
 Russell and Ruth Foisy ●
 Joel and Michelle Frauenheim
 Grace Froio
 César Galindo-Legaria and Zandra Navarro-Villicana
 Michelle Garrison ●
 Christopher and Doreen Gavin ●
 Sharon Gustafson ●
 Jeffrey and Cate Gutowski
 Christopher and Michele Hanzeli
 Raymond and Diana Hautala
 John and Mary Hempelmann ●
 David Heye
 Kent and Theresa Hickey ●
 Matt and Sarah Hipps
 William Hood
 Adam and Britney Janicki ●
 Gail N. Morgan, M.D. and Philippe E. Jeoffroy ●
 Edward and Elizabeth Johnston
 Lee and Maryann Jorgenson ●
 Anita Keahey ●
 Ryan and Laura Kelley
 Patrick and Kamila Kennedy ●
 The Kenny Family
 William and Christine Kerr

Ragan Kim
 Tom Knollmann ●
 Peter Lamb ●
 Chris and Maria LeCuyer ●
 Alexandra Lee
 Randy and Rosemary Leifer
 Clarence and Barbara Leingang ●
 Charles Lind and Cindy Corsilles
 Mary Loeken
 Kevin and Cindy Lohman
 Merton and Sharleen Lott ●
 Spencer and Elizabeth Lucas
 Jeff and Susan Lyon
 Rev. John C. Madigan ●
 Milo and Meghan Magnano
 Maurice and Pamela Manning
 Philip and Kelley Martin
 Tom and Tami Martin ●
 Marc and Terry Mayberg
 William and Colleen McAleer ●
 Kristy McDonough ●
 John and Catherine McDowall ●
 Brian and Mary Jo McFaul ●
 James McGinley ●
 Colm and Suzanne McGlynn
 Gerard and Karen McGlynn
 Kerry and Steve McMahon
 Mark Mennella and Jody Cunningham
 Mick and Joan Milasich
 Stan and Ann Milkowski ●
 Leigh Miller ●
 Rev. Jeffrey Moore
 Jerry and Jennifer Morales



Patrick and Julie Moran
 Edmund and Drew Ann Murphy
 Very Rev. Bryan A. Ochs
 Molly O'Donnell ●
 Bernadette O'Leary ●
 Anthony Olney and Mary McHugh ●
 Derek and Francis Olson
 Patty Oscar
 Our Lady of Mount Virgin Parish ●
 Robert Peck ●
 John and Mary Peterson ●
 Kevin Proctor



Dr. William Hundley and Kay Purcell ●
 Nicholas and Dana Questad ●
 Anne Quigg
 Chris and Julianne Read ●
 Maureen and John Reid ●
 Tim and Kris Rich
 Andrew and Jennifer Roben ●
 Rev. Justin M. Ryan
 Craig and Carly Schaefer ●
 Robert and Barbara Schille
 Jim and Nancy Schoeggl
 Tim and Pam Schwartz
 Mike Sellars and Carol Murphy
 Daniel and Mary Sherman ●
 Rev. Jack Shrum
 Marc and Kristin Silva
 Ronald and Stephanie Singler ●
 Peter and Terriko Somers ●
 St. Catherine School Parent Club ●
 St. Joseph Parents Club ●
 Matthew Hammond and Kim Stocks Hammond
 Kelsey Stoesser
 John and Joan Sullivan
 Robert Sullivan ●
 Scott and Michelle Summers
 Liz Swift ●
 Timothy and Mary Talevich
 Martin and Karen Tarabochia ●
 Ed and Rayme Teders
 Matt and Jennifer Tilghman-Havens
 John and Ellen Tobin
 Tom and Terri Turnure
 Anne Marie Twining
 Christopher and Lisa VanDerhoef ●
 Stephen VanDerhoef and Dianne Wright
 Michael and Susan Venable
 Jerry and Ruth Verhoff
 Heidi and Neil Wachter
 Richard Hopp and Deborah Walsh ●
 Matthew and Marianne Wells
 Kyle and Arlyce Welsh
 Ed and Cecilia Whatley
 Joseph and Donna Whitford ●
 Jeff and Melissa Williams
 Patrick and Kathleen Willis
 Philip and Monica Wingard ●
 Joe and Paola Womac ●
 Kathleen Wright and Dr. Martin Greene

Philip and Jennifer Yerkes
 Rosemary Zilmer ●

\$250 to \$499

Anonymous
 Miller Adams ●
 Marco Alban-Galeas ●
 Gregory and Heidi Allen
 Frank and Susan Amato ●
 Joy Aquino
 Jerrold and Cristina Bailet
 Dayton and Jeannie Balinbin ●
 Matthew and Courtney Barker
 Matt Barmore and Nancy Hanson
 Richard and Kathleen Barth
 Sandra Barton Smith and Shaun Smith ●
 Corliss Bauman
 Jacob and Sara Bayless da Costa
 Rev. Thomas Belleque ●
 Chris and Kate Berger
 Bob and Ellen Bollard
 Kimberly Brown ●
 Steve and Patricia Brown ●
 Frank and DeAnne Buono ●
 Jeff Busch
 Courtney A. Caldwell
 Bruce Carter and Betty Sanders ●
 Joseph and Teresa Clabots ●
 Kevin Coleman
 Robert Collins
 William and Jennifer Condon
 Reverend Scott Connolly ●
 Bruce and Carol Cooper ●
 Cameron Corr ●
 Grant and Rosie Courtney
 Joseph Cunnane ●
 Andrew Cutler ●
 Jennifer Daher ●
 Joseph and Sarah Dahleen ●
 James and Alyssa Darragh ●
 Gregg and Lea Davidson ●
 Cindy Davis
 Bertrand and Brooke DeBoutray
 Matthew and Rose DeBoer
 Thomas and Vida Delanty
 Luino and Margaret Dell'Osso, Jr.
 Brian and Molly Dennehy ●
 Kevin and Annie Dolan



Annual Contributors (cont.)

Rev. Bryan Dolejsi
 Douglas and Jeri Donnelly ●
 Patrick Donnelly ●
 Jereme Doss ●
 Rev. Kevin Duggan
 Jeff and Stacie Durbin
 Gerald and Caroline D'Wynter
 Gil and Connie Edwards
 Megin Edwards ●
 Michael and Jody Elsnor
 Facebook, Inc.
 Alyson Fanelli ●
 Dan and Arleen Fitzpatrick
 James and Ellen Flies
 Jason and Hera Fredette
 Rick and Barbara Friedhoff ●
 Denice Gardner ●
 Joan Geraghty
 Jane Gerritsen ●
 Todd and Katy Gregg
 Peter and Katherine Grosvenor
 Matt and Sarah Hanley
 John and Wendy Hardman
 Colleen Hauck
 Kate Hayatsu
 Rev. Kenneth Haydock ●
 David and Joan Heimbigner
 William Herber
 Rev. William Heric ●
 Leonard Hill ●
 Michael Hillman ●
 Don Hoffman
 Mike and Jennifer Holm ●
 Martino and Maura Hoss ●
 Steven Hovind ●
 Paul and Mary Ann Huddleston
 David and Kelly Hudgins
 Tom and Lori Huling ●
 Troy and Shannon Hull
 Jennifer Ibach ●
 Victoria and Kraig Jarman ●
 David L. Kelley ●
 Mario Forte and Kristine Keough Forte ●
 Marian Kessel
 Robert and De Anna Kieffer ●
 Joseph and Kathleen Kindell
 Al Komoroske
 Leonard and Martha Korslund
 Mary Ann Kozlovsky ●
 Anton and Anne Kramer
 Darren and Susan Krattli
 Bobby Kubacki
 James and Amy Kubacki
 Peter and Maureen Kures
 Larry and Julie LaPorte
 Darrel and Janalynn Larson
 Corinna Laughlin ●
 Maria Laughlin ●
 Law Office of Grant E. Courtney ●
 Jim and Marjorie Layton
 Jeff and Ann Leichter
 Raymond and Laura Liedtke ●
 Erin Luby

Therese Luger ●
 Connor Martin ●
 Noelle Mathias ●
 Harry Matthews ●
 Marc McClure and Erin Daly McClure
 Tofa and Betsy McCormick ●
 Tim and Jeannie McGinnis ●
 Vince and Jenny McGovern ●
 Thomas and Mary McHugh ●
 Mike and Peggy McKasy
 William and Christine McKay
 Jeff and Ellen McVicker
 Mary Catherine Mead ●
 Randy Mecham ●
 Ondria Mello ●
 Martin Messing ●
 Alice Milam
 Daniel and Lisa Monahan ●
 Lisa Monroe ●
 Matthew and Anne Moran
 Steve Marisette ●
 Moz Contributions ●
 Kate Muirhead ●
 Marian Mullally
 Rudy and Christine Navarro
 Janice Nelson ●
 Rob and Bonnie Nichols
 Peter and Tricia Nora
 Sister Marcia O'Dea, R.S.C.J.
 Brody O'Keefe ●
 Diego Villasana and Kaitlyn O'Leary ●
 Richard and Dina O'Leary
 Jackie-Lyn Olson ●
 Scott O'Toole and Lisa Napoli O'Toole
 Our Lady Star of the Sea Parish ●
 Robert and Lisa Pageler
 Matt and Samantha Parent
 Jeff Parietti ●
 Charles A. (Cap) Pearson ●
 Harold and Linda Phillips ●
 Keri Pickel ●
 Michael Pierce
 Michael Podlin ●
 Dylan and Heidi Pouley
 Andrew and Kaleigh Prentice
 Juliette Prince ●
 Heather Pruehs ●
 Dave and Rita Pruin
 Gina Pultorak ●
 Annie Quinn



Michael Quinn ●
 Matt and Meghan Remington
 Rudy Reyes, Jr. ●
 Conrad Reynoldson ●
 Paul Rittman and Judy DeLong-Rittman
 George and Susan Rockwell ●
 MK Rodgers ●
 Kevin and Amy Rosenfield
 Robert and Deanna Rusk
 Ken Rutz
 Rev. Steve Sallis ●
 Richard and Mary Santi ●
 Anne Sarewitz ●
 Dave Schappell ●
 Stephen Schneider
 Jack and Becky Schwaegler
 James Schwartz and Renee Willette ●
 Scott and Linda Severs
 Andy Sharpe ●
 Jana Sico ●
 Janice Silva
 Patty Smith ●
 Ronald and Angela Souza
 Mike Spanier
 St. Joseph Parish, Seattle
 Drew and Carrie Steen
 William and Margaret Street ●
 Dan and Kim Stockwell
 Dannette Sullivan ●
 Rev. Stephen Sundborg, S.J.
 Agustinus Sutandi and Nina Ariani
 Susan and Josh Sutton
 Lisa Swanson ●
 Carissa Talley
 Wayne Tavis
 Larkin Temme
 Hilaire Thomas
 T-Mobile Matching Gift Program
 Teresita Tonel
 Sister Mary Tracy, S.N.J.M. ●
 John and Lisa Tran
 Jeff and Stephanie Twining ●
 Keith and Lori VanderZanden
 Philip Waligora ●
 Clyde Walker ●
 Camarin and Matthew Wanamaker
 Susan Webster
 Michael and Mimi Wehner



Richard and Jennifer Wielbruda
 Megan Williams ●
 Victoria Woodarski ●
 Teresa Yang ●

\$100 to \$249

501 Commons
 Anonymous (14)
 Alex Aigner ●
 Keith and Tanya Akins
 Roberta Alba-Estrada ●
 Charisma Alex ●
 Dana Tad and Dominique Alex ●
 Bronwyn Allen ●
 Kelly Allen ●
 Andrew and Rachel Allen
 Amazon Smile Foundation ●
 Terrence Anderson ●
 Fred and Sheri Andrews
 Gregg and Kirsten Aoyama
 Suzanne and Joaquin Arango
 Jane Arnold
 Dan and Ann Ashe
 Alexander Audino
 Danielle Audino ●
 Mackenzie Audino ●
 Brian and Heidi Austin
 Scott and Jeanette Bader
 James and Eileen Baker ●
 Joanne Banschbach ●
 Stephen and Roxanne Barkley
 Charles Barnes
 Dan and Mary Beard
 Alana Bell ●
 Denise Bell ●
 Elsa Benitez
 Todd and Julie Berard
 Richard and Rose Berntsen ●
 Neal and Joanna Black ●
 Amanda Blair ●
 Michael and Kathy Blanchet
 Will and Carrie Blanton
 Willie Blue ●
 Thomas and Maureen Blum ●
 Clarence and Grace Bob
 Roberto and Karen Bombino
 James and Hilary Bosa
 Sharon Boulanger, Mike (Cheryl) Boulanger, Denys (Dale) Hoistad, Tim (Pearl) Boulanger
 Mary Brannan



Annual Contributors (cont.)



James and Doreen Brisch ●
Christa Brown ●
Roisin Bruce ●
Lee and Joanie Brumley ●
Dr. Kristine A. Brynildsen-Smith ●
Bob Buckley ●
Karah and Ryan Burgess
Richard and Karol Cahan ●
Brian and Christa Callanan
Mark and Katharine Cappo ●
George and Sharilyn Carroll
Cynthia Cawaling ●
Cassie Chhin ●
Donna Christensen
William and Claudia Cleneay
Riley Coleman
Melizza Collantes ●
Bryan and Teresa Coluccio
Gregory and Susan Coluccio ●
Yvonne Combs ●
Community Foundation of Greater Dubuque
Deacon Joseph and Barbara Connor ●
Mark Connor
Paul Connor
Dennis Cook ●
Jess and Brian Cunningham ●
Kathleen and Stephen Daspit
Craig and Barb Davis
Frank and Joanne Demarinis
Robert Denney ●
Sara DeRuyck ●
Megan Diefenbach
Rev. Michael Dion
Elizabeth and James Doncheck
Mickey Dunn and Jenny Farrell
Kip and Nancy Durrell ●
David Eastman and Colleen Clancy-Eastman
Brian and Katrina Engel
Rosemarie Engman ●
Lauren Exnicios ●
Joseph Fanelli ●
Mary Fanelli
Yousif and Sahar Farjo ●
Anthony and Christine Farrell
Michael and Megan Farrell
Michael Fatina ●
Patrick and Terri Feutz
Tom and Margaret Fine
Nancy Finkeldei ●
Johnny Flynn

Robert and Barbara Frayn
Connor Geraghty and Aurea Estrella-Geraghty
John Gerner ●
Deacon Jerry and Trese Graddon
Robert and Mary Granlund ●
Ronald and Alison Grant
Richard and Lisa Green
Michael Grohman ●
Chastity Groves ●
Emily Gudaitis ●
Sarah Gudaitis
Sean Haffey
Very Rev. Bradley R. Hagelin
William and Cathryn Hagelin
Jonathan and Amy Hall ●
Rachel Hall ●
Mary Ann Hardy ●
Gerald and Madeline Harrington
Kristin Haustveit ●
Greg and Annie Hawksford
Jennifer Hazzard ●
Daniel Healy ●
James Hembree
Jim Hennessey ●
Michael Henry ●
Dane Hofbauer ●
David Holt and Teresa Jolly Holt
David and Jeannie Horak
Ralph and Peggy Horner ●
Christian Hovind
Benjamin and Susan Howe
Helen Howe ●
Dan and Sue Huberty
Sean Huertas ●
Ron and Sherry Hulscher
Dianne Irwin ●
Richard and Christine Ito
William and Kathleen Janes ●
Marlys Jenkins
Rose Jin ●
Dan and Kimberly Johnson



Luana Johnson ●
Phyllis Johnson
Charles and Ann Johnston
Adam Karcz
Michael and Jeanne Karcz
John Keckemet and Jeanne Flohr
Matthew and Carolyn Kennedy
Paulette Kidder

King County Employee Giving Program
Rachel Kingsey ●
Jay and Susana Knapp
Tiffany Koenig ●
Danielle and Brendan Kolding ●
Ronald and Linda Krell
Renee Kurdzos
Gretchen Kurth ●
Charles and Chris Kusak ●
Rosemary and James LaCour ●



Elinor LaForge ●
James and Molly Lamb ●
Marcie and Christian Larson ●
Kevin and Tanya Lauckner
Mark and Sara Lauzen
William and Bridget Lawler
Rev. Gary Lazzeroni
Jerre Learned ●
Norman and Cathy Ledbetter ●
James and Mary Ann Legaz
Richard and Desiree Leigh ●
Curt Ligot and Mary Turla-Ligot ●
Steve and Dawn Locke
Christopher and Jody Lopat
Claudia Lord
Ryan Louie ●
Jack and Katie Lovejoy
Brad and Cecelia Loveless
Rev. John Ludvik
Kent and Julie Lundgren
James Lyons ●
Katie Madson
Charlotte Mariano ●
Gregory and Betsy Marsh
Jeanette McCallum ●
Joseph and Salli McCann
Rev. Michael J. McDermott ●
Rev. Jeff McDougall, S.J.
Patrick and Marianne McGah ●
Frances McKamey
Patricia McKay Lincoln
Rev. William McKee
Duncan McNab ●
Timothy McNamara ●
Joseph McRoskey
Mike and Solange Mecham
Elena Mest

Ethel Moons ●
John and Mary Moran ●
Raymond and Janet Morgan ●
Tim and Patricia Murphy ●
John Newhoff ●
Mary Newhoff
Ellen Nickerson ●
Rev. Matthew Oakland
Rourke O'Brien and Sayoko Kuwahara
Karin O'Connell ●
Rev. Natch Ohno, S.J. ●
Rev. Crispin Okoth
Joseph and Lisa O'Leary ●
Janice Olmes ●
Mary Olmes ●
Craig and Gail Olson ●
Dan and Amy Orm
John and Casey O'Rourke
Rev. Juan Carlos Orozco
Kristian and Jessica Patterson
Margaret Pepper
Marianne Pesigan ●
Scott and Nicole Pickett
Kristen Quilici ●
Peter Quinn ●
Karine Raetzloff ●
Raquel Ramsey ●
Arthur and Helen Reichlin
Alice Reimold
Allison Ricci ●
Nicholas Ritchey
Gregg and Cristina Riva
Geraldine Robben ●
Linda Robison
Deacon Teodoro and Maria Rodriguez
Martine Romero
Matt and Katie Rossmeissl
Mary and Randy Rudolph
Terry and Roberta Ryan
Terry and Cherie Santos ●
Joan Savard ●
David and Margie Schmutz ●
Steve and Stephanie Schmutz
Nancy Schneble ●
James Schneider, Sr.
Emily Schrock ●
Paul and Kathleen Seely
Kim SeEVERS
Arlene Seifert ●
Judith Shafer and Don Paterson ●
Kelley and Katie Shanahan ●
Lindsey Shannon ●
Ryan Shannon ●
Schuyler Shannon ●
Sydney Shannon ●
Chris Shine
Sharon Simpier ●
Jaime Singer ●
Portia Singian ●
Jonna Skokan and Joseph Skokan
Joseph Small
Michael and Christie Smith

Annual Contributors (cont.)

Luis Sotomaldonado ●
Wanda Stewart ●
Very Rev. Todd Strange
Kim and Dan Supple ●
James and Diane Sweeney
Carl Swenson ●
Stephen Tan ●
Thomas and Mary Lou Tebb
Sean Walsh and Julie Tilghman
Kip and Claudia Toner ●
Rev. Jack Treacy, S.J.
Lynne Turcotte
Michelle Turcotte
Maria Turla-Devera ●
U.S. Bank Private Wealth Management ●
Bjarne Ursin
Jeff and Mindy Ursino
Karl and Sarah Valentine ●
Ann Vandewark ●
Brian and Susan Vaughan
Diana Vaughn ●
Greg and Laura Veasy
Brock and Jennifer Veltri
Johnny and Kathleen Vigil
Rose Vlad
Beth and Matthew Vogel
James and Theresa Vopat ●
Marjorie Vranizan
Thuc-Nhu Vu
Mark Wagner and Dorothea Eberz-Wagner
Norma Wall ●



Thomas Walsh ●
William and Sandra Ward
Tom and Sally Weber ●
Bryan and Pam Weeks ●
Yoseph Werede ●
Walker Weston ●
William and Margaret Whetham
Courtney Williams
Lori Williams
John and Cheryl Wilson
Tim and Nicole Wilson
Lorraine Wojcik ●
Rev. Stephen Woodland ●
Steve and Jane Wraith
Deacon Joua Pao and Sua Thao Yang ●
Vincent and Niki Yarnot
Dorothy Zarelli

Up to \$99

Anonymous (7)
Renee Almy ●
Joyce Amatuzzo ●
Aaron and Dorothy Ambuske
Jackie Arnold ●
Ross Baker ●
Peter and Kyla Bartelheimer
Michael Baudino ●
James Beck ●
Keely Bell ●
Blackbaud
Jennifer Blankenship
Sarah Broadwell ●
James and Beverly Cacabelos
Courtney Cacabelos ●
Michael and Rebecca Cantu
Dan and Becki Chase
Wendy Clough
David and Zenaida Clymer
Kinser Coelho ●
Janie Collins ●
Andrea Connell ●
Jose Couto
Sister Joyce M. Cox, B.V.M. ●
Wynter Dait ●
Elisa DeLeon ●
Connor Delille ●
Austin Dickman
John and Tara Dogero ●
Stephen and Mary Elayne Dunphy
Caitlin Elsner ●
Finn Faldi ●
James and Corrine Feldman
John Ferraro ●
John and Shannon Flavin
Mike and Gina Fletcher
Mary Franse Corrales ●
Fred Meyer Community Rewards Program ●
Nancy Freeman ●
Jacqueline Frey
John Gaul
Anna Godornes ●
Helen Goehring
Kris Gonzales ●
Gerald and Annette Grimm
Ryan Gummow ●
Cathy Hall ●
Markie Hamlin ●
George Hammel
Martha Hanscom ●
Katie McKeehan Hart
Jay and Chris Hastings
Debbie Hawk ●
Winslow and Rita Hayes ●
Sister Lorene Heck, O.P.
Mick Heckathorn and Nicki Thiot ●
Doris Hickman
Katherine Hinterberger ●
Susan Holtzclaw ●
Susan Horther ●
James and Janice Johnsen
Christy Johnson ●

Daniel and Rebecca Johnson
Katelyn Johnson ●
Walter and Chris Korzeniecki
Lana Kuklina ●
Vickie Kush ●
Christina Laliberte ●
Trey Leigh ●
Tom and Kay Leslie
Anthony and Betty L'Esperance
Maurice Lewis ●



Dan Loyola ●
Patty Lutz ●
Roberta Madsen ●
Dayna Malik ●
Laura Mancuso ●
Mark and Terry Markuly
Rebecca McAfee
Terry and Margaret McGinnis
Holly McIver ●
Paul and Paula McMillen ●
Madison Mello ●
Mary Mellow ●
Sally Merriwether ●
David and Bonnie Meyer
Jackie Miller ●
Alicia Mitchell
Vasil and Mia Mlekarov ●
Suzanne Moreau
Rogelio and Thelma Mupas
Meg Nelson ●
Teresa Niebauer ●
Jeanine O'Connell ●
Erin Oest-Larsen ●
Janis Olson
Todd and Roberta Olson
Susie Orozco-Arroyo
Margaret Overturf ●
Sister Rosemary Perisich, S.N.J.M.
Patricia Petrino ●
Hieu Phung ●
Teresa Pierce ●
Margaret Portelance
Tamara Pulford ●
Edward Pursley ●
Gabriella Raeber ●
David and Kerry Ramseyer
Arnel and Pam Reyes ●
Earl Richardson ●
Mason Rivera ●
Rebeca Rivera ●
Laurie Robbins ●

Molly Rosen ●
Ian Rountree ●
Charles and Joyce Rousseau
Mary Kathleen Ryan ●
Brayden Sanchez ●
Patricia Schneider
Ann Schroeder
Emily Schwartz ●
Teresa Scott
Gerry Scully ●
Thomas Shanahan ●
Joseph and Dorothy Shaughnessy
Di Shepp ●
John and Susan Shuhler ●
Loren and Gestin Skaggs ●
Gene and Diane Slagle
Michele Slaughter ●
Makenzie Sliva ●
Melanie Smith ●
Michaela Smith ●
Raymond Smith and Karen Dunn-Huebel
Adam Springer ●
St. Mary Parish, Seattle ●
Robert and Medora Stevens
Kyle and Sara Stewart ●
Isabella Sundy
Edward Svendsen
Thomas and Sarah Swaner
Barbara Swann ●
Jim and Marci Thomsen ●
Dolores Tomlinson
Suzane Treener ●
Diane Triantis ●
Stephanie Van Leuven ●
Maria Vermeer ●
Lawrence and Marlene Vickers
Thomas and Laurie Vitt ●
Sarah Volta ●
Dan and Laura Vornbrock ●
Ryan Wheatley ●
Steve and Margaret White
Chris and Carolyn Wiemals
Margaret and Gerald Wiese ●
Storey Ann Winder
Bonnie Woodcock ●
Standford and Shane Wyatt
John Young and Marilyn Leonard ●



Gifts in Tribute

In Memory of Sharon Abrams

Anonymous
Gregg and Dora Alex
Molly Brackett
Lee and Joanie Brumley
Mike and Sharon Cowley
Rudy Reyes, Jr.
St. Nicholas Catholic School

In Memory of Deacon José Blakeley

Peter and Tina Petesch

In Memory of Charlie Brown

Kimberly Brown

In Memory of Donald D. Brown

Joan Brown

In Honor of Conne Bruce

Stan and Ann Milkowski

In Memory of Chris Canwell

Mick Heckathorn and Nicki Thiot
William and Kathleen Janes

In Honor of the Coleman Foundation

Jerre Learned

In Honor of Julie Coleman

Dan Coleman

In Memory of Evva Cook

Denise Bell

In Memory of Sam Cook

Alana Bell

In Honor of Jack Cunnane

Joseph Cunnane

In Honor of Mary Anne D'Ambrosio

John and Lilli Pietromonaco

In Memory of Father Paul Dalton

Maralea and Joseph Binz

In Honor of Richard and Maude Ferry

Anonymous

In Memory of Carol Kraft Flynn

Ed and Rayme Teders

In Memory of Michael Foy

James and Kathleen Conklin
Barbara Rush

In Memory of Paula Ann and John Jason Gale

Janice Silva

In Memory of Miacho Gummow

Ryan Gummow

In Memory of Thomas Henn

Megan Williams

In Honor of Don Herak

Hank and Catherine Worden

In Honor of Father William Heric

Maralea and Joseph Binz

In Memory of Marcelle Hickman

Kyle and Sara Stewart
Storey Ann Winder

In Honor of David and Shelley Hovind

Gregg and Kirsten Aoyama

In Honor of David Hovind

Christian Hovind

In Honor of Shelley Hovind

Paul and Shelly Capeloto
George and Sharilyn Carroll

In Memory of Chris Hurley

Todd and Julie Berard
Neal and Joanna Black
Julio De Villasante and Ana Sainz

Regan Hurley
Thomas and Mary McHugh
Peter and Tricia Nora
Keri Pickel

Dave Schappell
Ed and Cecilia Whatley

In Memory of Veda Lola Jellen

Jackie-Lyn Olson

In Memory of Nancy Kemp

Jane Gerritsen

In Memory of Dick Kennedy

Patrick and Kamila Kennedy

In Honor of the Steven Knight Family

Joanne Knight

In Honor of the Kramer Family

Michael and Barbara Evans

In Memory of Jeanne Marie Lee

John Keckemet and Jeanne Flohr

In Honor of Mary and Michael Lee

Kate McIntyre

In Honor of April Little

Derek and Francis Olson

In Honor of Wilfrid Loeken

Mary Loeken

In Memory of Donna Luger

Jerry and Mary Anne
D'Ambrosio
Marian Kessel
James and Amy Kubacki
Bobby Kubacki
James and Amy Kubacki
Darrel and Janalynn Larson
Lisa Monroe
Ken Rutz
Nancy Schneble

In Memory of Lisa Luger

Jerry and Mary Anne
D'Ambrosio
Stephanie Frey
The Luger Family
Loretta Mary Luger
Therese Luger
Daniel and Maryann Montandon
Jim and Carmen Sepic

In Memory Col. Edwin P. Ramsey

Raquel Ramsey

In Honor of Nadine Ramsey

Raquel Ramsey

In Honor of David Redenbaugh

John and Diane Redenbaugh

In Memory of Fr. Pat Ritter

Tom and Beth Anderson
Jane Arnold
Tony and Michelle Audino
Robert and Pauline Bach
Stephen and Roxanne Barkley
Charles Barnes
Corliss Bauman
Colleen and Jeff Bell
Sean and Drew Blazey
David and Jenney Burroughs
Richard and Karol Cahan
Jo Cameron
Thomas and Stephanie Casey
Gavin Cipoletti
Joseph and Teresa Clabots
Jonathan and Nancy Cluts
Sally Sue Coleman
John and Angela Connelly
Bob and Sharon Dahmen
Bruce and Mona Davies
Davis Family Legacy Group
(Kapela Family)
Bob and Cristina Dugoni
Jeff and Stacie Durbin
Kip and Nancy Durrell
David Eastman and Colleen Clancy-Eastman
Peter and Sharon Faricy
Patrick and Deborah Feist
Patrick and Terri Feutz
Kevin and Julie Cipoletti
Bill & Melinda Gates Foundation
Blaise and Molly Goudy
Robert and Mary Granlund

In Honor of John Meisenbach

John and Diahann Braseth

In Memory of Anna Louise Micek

Jim and Mary Ellen Weber

In Memory Gladys Mulburg

Jeffrey and Cate Gutowski

In Honor of Tom and Jan O'Callahan

Bob Buckley
Michael and Megan Farrell
Albert and Susan Ocoma

In Memory of Nathan Proctor, Sr.

Rodney and Constance Proctor

In Memory of Melissa Protz

Anonymous
James and Doreen Brisch
William and Claudia Cleneay
Robert Collins
Elizabeth and James Doncheck
David and Jeannie Horak
Daniel and Rebecca Johnson
Johnson & Johnson
Adam Karcz
Michael and Jeanne Karcz
Al Komoroske
William and Carolyn Protz
Mary and Randy Rudolph
James Schneider, Sr.
Jim and Shannon Schneider
Patricia Schneider
Stephen Schneider
Lynne Turcotte
Michelle Turcotte
James and Theresa Vopat
William and Sandra Ward

In Memory Col. Edwin P. Ramsey

Raquel Ramsey

In Honor of Nadine Ramsey

Raquel Ramsey

In Honor of David Redenbaugh

John and Diane Redenbaugh

In Memory of Fr. Pat Ritter

Tom and Beth Anderson
Jane Arnold
Tony and Michelle Audino
Robert and Pauline Bach
Stephen and Roxanne Barkley
Charles Barnes
Corliss Bauman
Colleen and Jeff Bell
Sean and Drew Blazey
David and Jenney Burroughs
Richard and Karol Cahan
Jo Cameron
Thomas and Stephanie Casey
Gavin Cipoletti
Joseph and Teresa Clabots
Jonathan and Nancy Cluts
Sally Sue Coleman
John and Angela Connelly
Bob and Sharon Dahmen
Bruce and Mona Davies
Davis Family Legacy Group
(Kapela Family)
Bob and Cristina Dugoni
Jeff and Stacie Durbin
Kip and Nancy Durrell
David Eastman and Colleen Clancy-Eastman
Peter and Sharon Faricy
Patrick and Deborah Feist
Patrick and Terri Feutz
Kevin and Julie Cipoletti
Bill & Melinda Gates Foundation
Blaise and Molly Goudy
Robert and Mary Granlund

Rev. Kenneth Haydock
Dan and Sue Huberty
Anne M. Jenkins
Charles and Ann Johnston
June Kennedy
Jay and Susana Knapp
William and Bridget Lawler
Jim and Marjorie Layton
Tim and Tina Lee
Jeff and Susan Lyon
Rev. John C. Madigan
Maurice and Pamela Manning
Patrick and Judy Manza
TJ and Soozie McGill
Mick and Joan Milasich
Jackie Miller
Daniel and Lisa Monahan
Edmund and Drew Ann Murphy
Tim and Patricia Murphy
Rourke O'Brien and Sayoko Kuwahara
Timothy and Lisa O'Keefe
Craig and Gail Olson
Todd and Roberta Olson
Patty Oscar
Scott O'Toole and Lisa Napoli O'Toole
Sandy Phillips
Margaret Portelance
Juliette Prince
Judy DeLong-Rittman and Paul Rittman
Gregg and Cristina Riva
Matt and Katie Rossmessl
Charles and Joyce Rousseau
Gregory and Tracey Russell
Rev. Justin M. Ryan
Joan Savard
Stephen and Diana Schiro
Jim and Nancy Schoegg
Chris Sievers and Jo-Anne Shanahan
Michael and Christie Smith
Karleen Snetsinger
St. Charles Borromeo Parish
Martin and Karen Tarabochia
John and Ellen Tobin
Mark Wagner and Dorothea Eberz-Wagner
Jim and Mary Ellen Weber
Bryan and Pam Weeks
John Young and Marilyn Leonard
David and Sally Wright

In Memory of Father Lawrence Robinson

Troy and Shannon Hull

In Memory of Trudi Rosenkrantz

Joseph Fanelli

In Honor of Jim Sinegal

John and Diahann Braseth

In Memory of Carol Speltz

David and Mary Meucci

In Honor of Kelly Surapaneni

Sean McGraw

In Honor of Liz Swift and the Holy Names Academy Staff and Faculty

Tom and Mary Herche

In Honor of Karen Tarabochia

Brian and Conne Bruce
Frank and Joanne Demarinis
Nancy Freeman
Tom and Lori Huling
Tom and Tami Martin
Barbara Swann

In Memory of Nunny and Grandad Triantis

Mason Rivera

In Memory of Dan Twining

Kelly Allen
Anonymous
Sharon Boulanger, Mike (Cheryl) Boulanger, Denys (Dale) Hoistad, Tim (Pearl) Boulanger
Bob and Julie Breshock
Brian and Conne Bruce
Kevin and Colleen Flanigan
John and Wendy Hardman
Luana Johnson
Norman and Cathy Ledbetter
Jeanette McCallum
Geraldine Robben
Sandra Barton Smith and Shaun Smith
Kim and Dan Supple
Martin and Karen Tarabochia
Norma Wall

In Honor of Peter Wickstrand

Tiffany Koenig

In Honor of Monica Wingard

Jason Burnett and Romina Rafer

Fulcrum Central Endowments

Bertha Marie Allen Endowment For Tuition Assistance
Deacon José Blakeley Tuition Assistance Endowment
Boulanger Family Endowment for Tuition Assistance in Pierce County
Archbishop Alexander J. Brunett Endowment for Families in Special Need
The 21st Century Fund: An Endowment for Cabrini Students
Archbishop Thomas A. Connolly Endowment
Eckmann Endowment
Fulcrum Early Childhood Education Fund
James P. Healy Legacy Endowment for Tuition Assistance In Pierce County
George and Debra Hofbauer Endowment
Horrigan Scholarship for O'Dea High School and the University of Notre Dame
Jesse Legacy Endowment
Rhoady and Jeanne Marie Lee Endowment
Lisa Luger Memorial Endowment
Lundberg Family Endowment
Archbishop Thomas J. Murphy Endowment
Priests' Endowment
Father Patrick Ritter Endowment
Blanche and Louis Schmidt Memorial Endowment Fund for Tuition Assistance
School Partnership Grant Endowment
Sisters' Endowment
Southwest Washington Endowment for Tuition Assistance
St. Cecilia Catholic School Patron's Endowment
St. Elizabeth Ann Seton Catholic High School Endowment
St. Elizabeth Ann Seton Endowment
Students' Endowment for Tuition Assistance
Jim Sund and Dr. Anne Mulligan Scholarship Endowment
Teachers, Staff and Principals Endowment
Tucci Family Endowment
Tuition Assistance Legacy Endowment
Wyckoff Family Endowment

Custodial School Endowments

The Fulcrum Foundation serves as the custodian for individual school endowments. By combining resources under Fulcrum Foundation investment management, local schools benefit from the advice and services of Fulcrum's fund manager and enjoy a reduced fund manager's fee, while retaining discretion to invest their portfolios according to recommended options.

What Will Your Legacy Be?

Fulcrum's Legacy Society empowers members to continue their philanthropic priorities through estate planning. Donors can continue providing critical support to Catholic schools and students in the Archdiocese of Seattle for generations to come.

"Deciding what to include in our estate plans came down to hope for the future," said Nick and Dana Questad, Legacy Society members. "What do we hope for the next generation? One of our guiding principles is passing our faith to our children. Catholic education is absolutely about academic excellence, but it's also a profound opportunity to be immersed in our Catholic faith. Through Fulcrum, we found a way to live out our dream and make an impact for our neighbors."

Legacy Society members can give through their estate in the following ways:

- Bequest
- Gift of a life insurance policy
- Beneficiary designation of retirement assets or donor advised funds
- Charitable trust

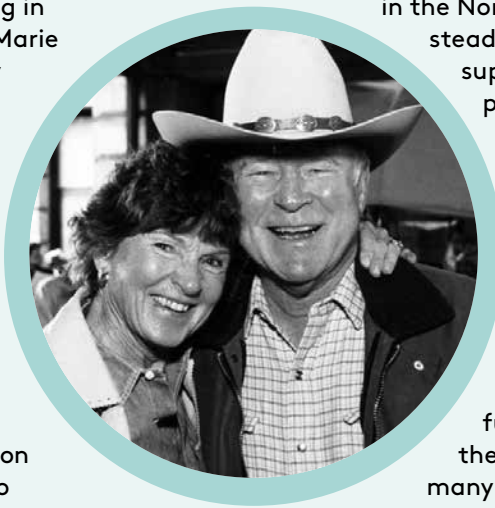
For more information about the Legacy Society, please contact Conne McGlynn Bruce, advancement director, at conne.bruce@fulcrumfoundation.org.



Remaining faithful.

Rhoady and Jeanne Marie Lee were deeply committed to Catholic education throughout their lifetimes. Jeanne Marie passed away in January 2021, nine years after her husband's passing in 2012. Rhoady and Jeanne Marie leave behind a long legacy of support for Western Washington Catholic schools, including Holy Names Academy, Seattle Preparatory School, Forest Ridge School of the Sacred Heart, and Seattle University.

Rhoady was posthumously awarded the Archbishop's Award at the 2013 Celebration of Light for his dedication to Catholic schools. As members of the Legacy Society, Rhoady and Jeanne Marie left Fulcrum a \$1 million gift from their estate, ensuring that their lifetime philanthropic support of Catholic education will continue far into the future.



Mike Lee, one of Rhoady and Jeanne Marie Lee's children, said, "Throughout their lives, my parents consistently and generously supported Catholic education in the Northwest, and my mom steadfastly continued that support after my dad's passing in 2012. They both believed deeply in the value of an excellent education rooted in faith and delivered in the supportive environment of a Catholic school. They knew that the influence of that education fundamentally influenced them and the lives of so many that received a Catholic education, and that influence then extended out into the communities in which they lived. They were thrilled to be able to see the great work that the Fulcrum Foundation does to increase access to this excellent education!"



Legacy gifts play an integral part in the Fulcrum Foundation's ability to maintain and broaden its support of Catholic schools in the Archdiocese of Seattle for generations to come. We are deeply grateful to the members of the Legacy Society who have included the Fulcrum Foundation in their estate plans.

† indicates donor is deceased

- | | |
|-------------------------------------------------------------------------------------------------------------------------------------------------------------------------------------------------------------------------------------------------------------------------------------------------------------------------------------------------------------------------------------------------------------------------------------------------------------------------------------------------------------------------------------------------------------------------------------------------------------------------------------------------------------------------------------------------------------------------------------------------------------------------------------------------------------------------------------------------------------------------------------------------------------------------------------------------------------------------------------------------------------------------------------------------------------------------------------------------------------------------------------------------------------------------------------------------------------------------------------------------------------------------------------------------------------------------------------------------------------------------------------------------------------------------------------------------------------------------------------------------------------------------------------------------------------------------------------------------------------------------------------------------------------------------------------------------------------------------------------------------------------------------------------------------------------------------------------------------------------------------------------------------------------------------------|-----------------------------------------------------------------------------------------------------------------------------------------------------------------------------------------------------------------------------------------------------------------------------------------------------------------------------------------------------------------------------------------------------------------------------------------------------------------------------------------------------------------------------------------------------------------------------------------------------------------------------------------------------------------------------------------------------------------------------------------------------------------------------------------------------------------------------------------------------------------------------------------------------------------------------------------------------------------------------------------------------------------------------------------------------------------------------------------------------------------------------------------------------------------------------------------------------------------------------------------------------------------------------------------------------------------------------------------------------------------------------------------------------------------------------------------------------------------------------------------------------------------------------------------------------------------------------------------------------------------------------------------------------------------------------------------------------------------------------------------------------------------------------------|
| <p>Anonymous (6)
 Bertha Marie Allen†
 Rick and Marguerite Angelo
 Earl† and JoAnn Angevine
 Tony and Michelle Audino
 Michael and Mary Rose Blatner
 Jack and Maralyn† Blume
 Maurice L. Bombar, Jr.†
 Richard† and Mary Ann Boulanger
 Michael and Cecilia Brennan
 Francis† and Helyn Browne†
 Brian and Conne Bruce
 Archbishop Alexander J. Brunett†
 Dan and Julie Coleman
 Vera Cornell†
 Luino and Margaret Dell'Osso, Jr.
 John† and Elizabeth Eckmann†
 William Eisiminger
 Rick and Patti Fersch
 Joseph and Terri Gaffney
 John F.† and Florence B.† Gallo
 Margaret (Peg) Haggerty
 Martha Hanscom
 Honorable James P. Healy†
 Shawn and Kathie Hoban
 George and Debra Hofbauer
 Charles† and Patricia Holmes
 Theodore† and Constance Hossfeld†
 Bruce Houk
 David and Shelley Hovind
 Kevin and Cathleen Hylton
 Anne M. Jenkins
 Ronald and Kathleen Karlberg
 Mike and Mary Lee
 Rhoady† and Jeanne Marie Lee†
 Tom and Mary Pat Lord
 Merton and Joanne† Lott
 Carol Lubovich†
 The Lundberg Family Giving Fund
 Deacon Craig and Marti Lundberg
 Joe and Mary Magnano</p> | <p>Rev. Paul Magnano
 Michael and Michelle Maher
 Robert P. Mallon
 Deacon Larry and Karen McDonald
 Tim and Jeannie McGinnis
 Mike and Barbara McKernan
 Robert and Carol McLaughlin
 Steven and Mary Jane Medalia
 Kevin and Betty Mest
 Tim and Sara Mooney
 Rourke O'Brien and Sayoko Kuwahara
 Anthony Olney and Mary McHugh
 Glenna Olson
 Tom† and Sandy Phillips
 Dr. William W. Hundley and Kay E. Purcell
 Nicholas and Dana Questad
 Rev. Michael Radermacher
 Rev. John Renggli
 Patricia Clemens Repikoff
 Rev. Stephen C. Rowan
 Very Rev. Michael G. Ryan
 Sherri Schettler
 Ty Scheumann
 Carol Sigg
 Karleen Snetsinger
 John† and Rose Southall
 John and Joan Sullivan
 Jack† and Marion Sullivan
 Jim Sund and Dr. Anne Mulligan
 Liz and Steve† Swift
 Michael A. Tucci
 Scott and Michelle Ventoza
 Dale Vogel and Nancy Bird
 Deacon T. Jackson and Mary Ellen† Warfield
 Edward C. Wartelle, Sr.†
 Pete and Karen Wickstrand
 Very Rev. Gary M. Zender
 James and Barbara Ziemann</p> |
|-------------------------------------------------------------------------------------------------------------------------------------------------------------------------------------------------------------------------------------------------------------------------------------------------------------------------------------------------------------------------------------------------------------------------------------------------------------------------------------------------------------------------------------------------------------------------------------------------------------------------------------------------------------------------------------------------------------------------------------------------------------------------------------------------------------------------------------------------------------------------------------------------------------------------------------------------------------------------------------------------------------------------------------------------------------------------------------------------------------------------------------------------------------------------------------------------------------------------------------------------------------------------------------------------------------------------------------------------------------------------------------------------------------------------------------------------------------------------------------------------------------------------------------------------------------------------------------------------------------------------------------------------------------------------------------------------------------------------------------------------------------------------------------------------------------------------------------------------------------------------------------------------------------------------------|-----------------------------------------------------------------------------------------------------------------------------------------------------------------------------------------------------------------------------------------------------------------------------------------------------------------------------------------------------------------------------------------------------------------------------------------------------------------------------------------------------------------------------------------------------------------------------------------------------------------------------------------------------------------------------------------------------------------------------------------------------------------------------------------------------------------------------------------------------------------------------------------------------------------------------------------------------------------------------------------------------------------------------------------------------------------------------------------------------------------------------------------------------------------------------------------------------------------------------------------------------------------------------------------------------------------------------------------------------------------------------------------------------------------------------------------------------------------------------------------------------------------------------------------------------------------------------------------------------------------------------------------------------------------------------------------------------------------------------------------------------------------------------------|

Trustees

Archbishop Paul D. Etienne

Tony Audino
Chair of the Board
Co-CEO, PeoplePath

Michelle Audino
Chair, Development Committee

Ignacio Dávila
Chair, Governance Committee
Senior Program Manager, Microsoft Stream,
Microsoft

Kristin Dixon
Superintendent, Office for Catholic Schools

Sheryl Gudaitis
Outpatient Cancer Program and Infusion
Units Manager, Fred Hutchinson Cancer
and University of Washington

Brian Hanson
Senior Vice President of Institutional Sales,
Griffin Capital Securities

Clare Henry
Global Vice President Analyst Relations, SAP

Roy F. Heynderickx, Ph.D.
President, Saint Martin's University

Anthony Holter, Ph.D.
Executive Director, Empower Illinois

Regan Hurley
Secretary, Board of Trustees
Co-Chair, Strategic Planning Committee
Partner, PointForward Ventures

Ozo Jaculewicz
Chair, Finance Committee
Manager & Senior Portfolio Specialist,
Wells Fargo Asset Management

Steve Knight
Chair, Human Resources Committee
CEO, Olympic Eagle Distributing

Diane Siderius Kocer
Executive Director, AGC Education Foundation

Mike Lee
Chair, Archdiocesan School Compensation
Committee
President, Lakeside Industries

April Little
Chair, Diversity Committee
Vice Principal of Academics, Holy Names
Academy

Very Rev. Paul A. Magnano
Vice Chair, Board of Trustees
Parish Priest, Immaculate Conception Parish,
Mount Vernon; St. Charles, Burlington;
St. Catherine, Concrete; Sacred Heart,
La Conner; Immaculate Heart of Mary,
Sedro-Woolley

Robert McLaughlin
Key Bank, Retired

Daniel J. Merlino
Principal, ECG Management Consultants

Robert Modarelli, III
President, Bellarmine Preparatory School

Most Rev. Daniel Mueggenborg
Auxiliary Bishop of Seattle

Janet O'Callahan
Computer Consultant

Kevin Proctor
Regional Health Administrator, Public Health,
Seattle and King County

David Redenbaugh
Chair, Amici (July 2020-November 2020)
Lead Engineer, Ripl

Kendra Reiser
Chair, Amici (November 2020-present)
Project Manager, Career Connect Washington

Mike Ronan
Co-Chair, Strategic Planning Committee
Partner/Principal, Ernst and Young

Joe Schick
Treasurer, Board of Trustees
Chief Financial Officer, Archdiocese of Seattle

Matthew Shanahan
Chair, Marketing Committee
Co-Founder, Chief Strategy Officer, Lockstep
Network, Inc

Vivian K. Shannon
Executive Director, Fulcrum Foundation

Rev. Stephen Sundborg, S.J.
President, Seattle University

Philip VanDerhoef
Chair, Distribution Committee
Attorney, Fain Anderson VanDerhoef, PLLC

Emeritus Trustees

George Hofbauer
Rev. Stephen C. Rowan
Mary Lee



Recovering some normalcy.

#OnwardStrong



FulcrumFoundation.org
710 Ninth Avenue | Seattle, WA 98104
206.219.5826 | info@FulcrumFoundation.org

